

Norton

REGD. TRADE MARK

PLEASE NOTE PRICES
QUOTED IN THIS LIST
ARE SUBJECT TO 2 1/2%
INCREASE.

SPARE PARTS LIST FOR 1955

Model 7 Dominator Twin
and
Model 88 De luxe Twin

PRICE 2s. 6d.

NORTON MOTORS LTD.
BRACEBRIDGE ST., BIRMINGHAM, 6
ENGLAND

Phone : Aston Cross 3711 (Private Branch Exchange)

Grams : "Nortomo, Birmingham."

www.britcycle.com.au

Norton

SPARE PARTS LIST

1955

Model 7 Dominator Twin
and
Model 88 De luxe Twin

PRICE - 2S. 6D.

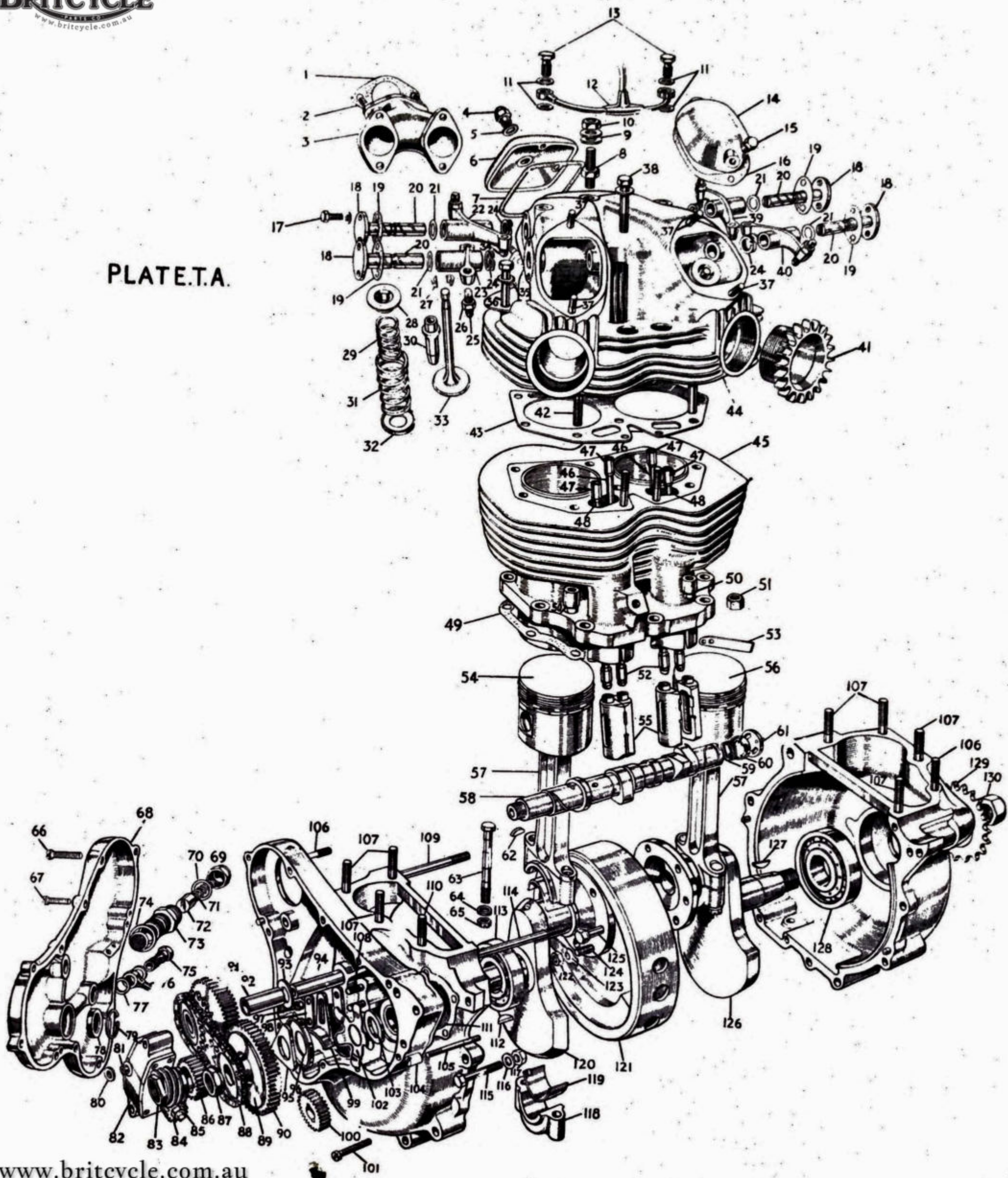


NORTON MOTORS LIMITED
Bracebridge Street, Birmingham 6, England

Phone : Aston Cross 3711 (Private Branch Exchange)

Grams : "Nortomo, Birmingham."

PLATE.T.A.



INDEX

	Page		Page
Air control lever	13	Hub brake shoes and linings	20
Air filter and fittings	31	Hub parts (common to front and rear)	20
Amal carburetter	8	Kickstarter parts	16
Battery carrier	30	Lamp (front)	30
Cable clips (rubber)	31	Lamp (rear)	31
Carburetter	8	Magneto and drive parts	6
Chain (front)	26	Mudguard (front)	28
Chain (rear)	26	Mudguard (rear)	29
Chain adjuster (front)	15	Number plate (front)	29
Chain adjuster (rear)	26	Number plate (rear)	29
Chaincase and fittings (front)	22	Oil pipes and fittings	15
Chainguard (rear)	24	Oil pump parts	7
Centre prop stand and fittings	28	Oil tank and fittings	14
Clutch control lever	13	Petrol tank and fittings	14
Clutch group	18	Pillion footrests	30
Control cable adjuster and nipples	13	Pistons and rings	7
Control cables	13	Positive footchange parts	18
Crankcase and fittings	5	Prop stand and fittings	28
Crankcase pressure and heater fittings	5	Push rods and tappets	6
Cylinder head, barrel, studs and bolts	7	Rear brake pedal and fittings	24
Dynamo drive parts and securing fittings	6	Rear chainguard	24
Dual seat and fittings	29	Rear lamp and fittings	31
Engine plates	24	Rear mudguard stays and fittings	29
Electric horn and fittings	31	Rear number plate	29
Engine sprocket	26	Rear suspension	26
Engine steady stay and fittings	5	Rear wheel and fittings	20
Exhaust pipe, silencer and fittings	10	Rings	7
Footrests and fittings	24	Rocker box fittings	6
Forks (front)	10	Side prop stand and fittings	30
Frame	26	Spokes	22
Front brake lever	13	Stand (front)	30
Front mudguard, stays and fittings	28	Tappets	6
Front number plate	29	Timing gear and fittings	5
Front stand	30	Tools	31
Front wheel and fittings	20	Tool box and fittings	29
Gearbox axle sprocket	16	Transfers	31
Gearbox fixing bolts	15	Twist grip	13
Gearbox front chain adjuster	15	Valves, guides, springs, etc.	7
Gearbox pinions, shafts, bearings	15	Voltage regulator and fittings	31
Gearbox shell	15	Wheel (front)	20
Handlebar and fittings	12	Wheel (rear)	20
Headlamp and parts	30	Wheel rims and spokes	22
Horn and fittings	31		

INSTRUCTIONS FOR ORDERING SPARE PARTS

This Spare Parts List deals with replacement parts for 1955 Model 7 Dominator Twin and Model 88 De Luxe Twin.

It is most essential that the Engine and Frame Number of the machine is stated. The Engine Number is to be found on the transmission side of the Crankcase, and the Frame Number is stamped on the Head Lug of the Frame, below the steering damper anchor plate ; the Model 88 De Luxe Frame Number is stamped on the near side Rear Frame Gusset Plate. It is always advisable to order parts on a separate sheet, and not to include on the same sheet other matter of a different nature ; this facilitates prompt despatch.

It is found in a number of instances that money orders and postal orders are sent in parcels containing patterns ; this is inadvisable. We strongly recommend parts as patterns being despatched separately, and a covering letter sent containing the remittance for replacement parts.

RETURNING MACHINES FOR OVERHAULING

When returning machines or parts for repair or overhaul, these should be sent carriage paid, and with the sender's name and address in full securely attached. It is also advisable to state on the tally that a letter has been sent respecting the parts, and giving the date. All easily detached fittings should be removed, such as Lamps, Horns, Tool Bags, Speedometers, etc. ; these are liable to be lost or damaged in transit, and the Company cannot accept any responsibility for them.

ESTIMATES FOR REPAIRING MACHINES

We are always prepared to give approximate estimates for the cost of repairs ; it is quite impossible to give a firm quotation. Additional parts may be found necessary during the process of repair, unforeseen when preparing an estimate. Should our estimate for repair not be accepted, a charge may be made in accordance with work entailed in dismantling and re-assembling. When we give an estimate for the cost of repairs, and this is curtailed by the owner, we cannot accept any responsibility for the performance of the machine ; it is always preferable to accept our estimate in full.

TERMS OF BUSINESS

Our terms are strictly nett cash with order or cash against prepayment invoice. The exact amount, plus 5% to cover postage or carriage and packing (subject to a minimum of 6d.), packing cases or crates to be extra, must be remitted, or when the cost of the parts required is unknown, a sum likely to cover the cost should be enclosed ; if the amount remitted is more than the cost of the parts that are ordered, the balance will be returned. Cheques and postal orders should be made payable to "Norton Motors, Ltd.," and crossed Barclays Bank, Ltd. Prices quoted in this list do not include the cost of carriage or fitting. We reserve the right to alter prices or specification of any parts at any time without notice. Where parts are urgently required, remittance may be sent by Telegraphic Money Order, but it is absolutely essential that the sender fill in his name and address in the space provided on the Post Office Money Order Form. Unless this is done, the Post Office do not give us the information in the telegram. It is necessary that all orders given by wire or 'phone should be confirmed by letter at the earliest opportunity.

DEPOSIT ACCOUNT

We strongly recommend riders of our machines to open a deposit account ; this can be done by depositing with us not less than £10. This will ensure goods to that value being despatched with the least possible delay. When ordering by 'phone, wire or post, this often avoids great inconvenience, and for the benefit of the depositor, a monthly statement of account is rendered, showing credit balance. Under no circumstances whatever can parts be despatched without remittance covering same has been sent, unless a deposit account is opened. Should the machine be disposed of at a later date, we are always prepared to remit any amount that may be remaining.

PARTS BY C.O.D. SYSTEM

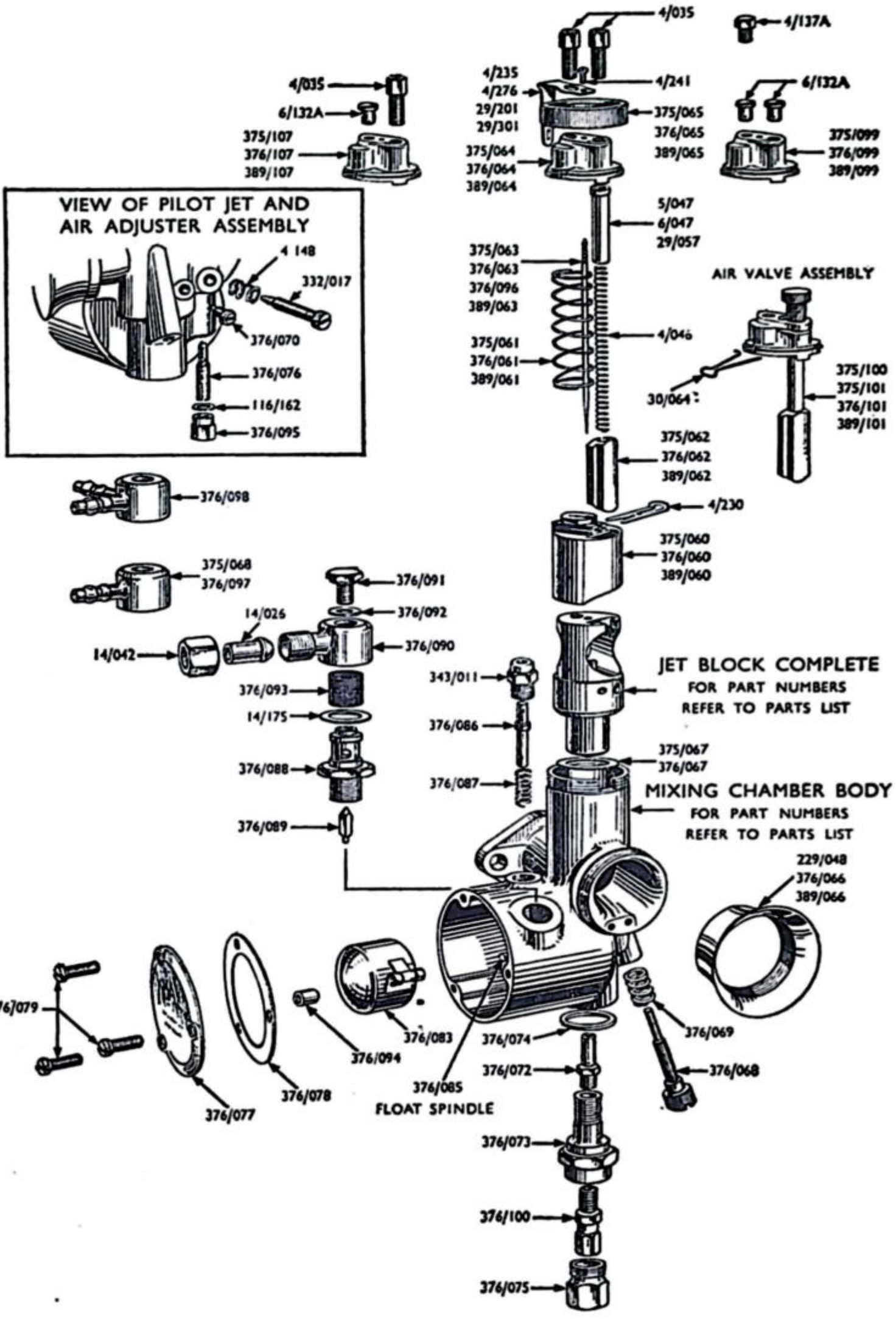
Unless remittance is received with order, parts are despatched by C.O.D. System or against proforma invoice at our discretion.

PART No.	PLATE No.	DESCRIPTION	QTY.	USED ON	PRICE EACH
CRANKCASE AND FITTINGS					£ s. d.
HI2/1	—	Crankcase with timing cover	1	7, 88	14 0 0
DI2/6	TA/68	Crankcase timing cover	1	7, 88	1 17 6
T2236	—	Paper washer for timing cover	1	7, 88	9
HI2/704	—	Crankcase timing side	1	7, 88	7 2 6
HI2/703	—	Crankcase driving side	1	7, 88	5 0 0
NOTE.—Half crankcases and timing cover cannot be supplied separately. Therefore it is necessary to return sound half for matching in the works.					
DI2/18/TS	—	Crankcase camshaft bush timing side ..	1	7, 88	5 0
DI2/18/DS	—	Crankcase camshaft bush driving side ..	1	7, 88	5 0
DI2/2(L)	TA/107	Crankcase cylinder base stud, $\frac{3}{8}$ in. diameter	7	7, 88	1 0
DI2/2(S)	TA/110	Crankcase cylinder base stud, $\frac{1}{8}$ in. diameter	2	7, 88	10
DI2/3(L)	TA/51	Crankcase cylinder base stud nut, $\frac{3}{8}$ in. dia.	7	7, 88	6
DI2/3(S)	TA/50	Crankcase cylinder base stud nut, $\frac{1}{8}$ in. ..	2	7, 88	5
E3336	—	Crankcase drain plug	1	7, 88	8
I0009	—	Crankcase drain plug washer	1	7, 88	3
DI2/912	—	Crankcase and magneto joint washer ..	1	7, 88	3
T0940	TA/66	Timing cover screws (long)	6	7, 88	6
E6980	TA/67	Timing cover screws (short)	5	7, 88	5
DI2/913	TA/78	Timing cover mainshaft oil seal	1	7, 88	1 0
DI2/914	TA/79	Circlip for mainshaft oil seal	1	7, 88	6
HI2/16945	—	Crankcase oil sump filter body	1	7, 88	7 6
HI2/16949	—	Filter body copper and asbestos washer ..	1	7, 88	6
HI2/16946	—	Filter body gauze	1	7, 88	2 6
HI2/16947	—	Filter body gauze retaining plate	1	7, 88	6
HI2/16948	—	Filter body circlip	1	7, 88	6
CRANKCASE PRESSURE AND BREATHER FITTINGS					
DI2/915	—	Timing cover pressure valve complete ..	1	7, 88	12 6
DI2/916	TA/73	Pressure release valve body	1	7, 88	7 6
DI2/917	TA/72	Piston for release valve	1	7, 88	2 0
DI2/918	TA/71	Pressure release valve spring	1	7, 88	3
DI2/919	TA/74	Washer for release valve body	1	7, 88	3
DI2/920	TA/69	Nut for release valve body	1	7, 88	2 6
DI2/921	TA/70	Washer for release valve body nut	1	7, 88	3
DI2/708	—	Crankcase breather pipe with flange ..	1	7, 88	2 0
DI2/923	—	Crankcase breather pipe securing bolt ..	1	7, 88	5
ENGINE STEADY STAY AND FITTINGS					
DI2/932	—	Engine steady stay	1	7	3 6
T12171	TA/8	Stud for steady stay (frame)	1	7	1 6
I8032	—	Steady stay stud (in head)	1	7, 88	1 6
E3224	TA/10	Nut for steady stay stud	2	7	4
E5376	TA/9	Washer for steady stay stud	2	7	3
HI2/2/932	—	Cylinder head steady plate	1	88	7 6
E3798	—	Steady plate top or middle plate bolt ..	2	88	4
E3231	—	Nut for bolt	2	88	4
I1796	—	Washer for bolt	2	88	3
TIMING GEAR FITTINGS					
DI2/790	TA/58	Camshaft	1	7, 88	4 15 0
DI2/744	—	Camshaft washer	1	7, 88	3
DI2/933	TA/61	Camshaft breather stationary plate ..	1	7, 88	2 0
DI2/934	TA/60	Camshaft breather rotary plate	1	7, 88	2 0
DI2/935	TA/59	Camshaft breather spring	1	7, 88	3
DI2/58	TA/86	Half time pinion	1	7, 88	10 0
E3683	TA/112	Half time pinion key	1	7, 88	3
DI2/936	TA/95	Half time pinion backing washer	1	7, 88	3 0
DI2/937	TA/91	Intermediate gear with sprockets	1	7, 88	2 15 0
DI2/938	TA/92	Bush for intermediate gear	1	7, 88	4 6
DI2/939	TA/93	Washer for intermediate gear	1	7, 88	3
DI2/940	TA/94	Intermediate gear wheel spindle	1	7, 88	4 0
DI2/941	—	Circlip for gear wheel spindle	1	7, 88	6
DI2/79	TA/89	Camshaft sprocket	1	7, 88	1 10 0
E3683	TA/62	Camshaft sprocket key	1	7, 88	3
DI2/942	TA/87	Camshaft sprocket nut	1	7, 88	2 3

PART No.	PLATE No.	DESCRIPTION	QTY.	USED ON	PRICE EACH
PUSH RODS AND TAPPETS					£ s. d.
D12/82 (In)	TA/46	Push rod complete (inlet)	2	7, 88	9 0
D12/82 (Ex)	TA/48	Push rod complete (exhaust)	2	7, 88	9 0
D12/86	TA/47	Push rod top	4	7, 88	4 0
D12/83	TA/52	Push rod ball end	4	7, 88	3 6
H12/75	TA/55	Tappet	4	7, 88	8 6
D12/943	TA/53	Tappet locating plate	2	7, 88	5 0
D12/944	—	Tappet locating plate screw	4	7, 88	3
ROCKER BOX FITTINGS					
D12/99(RH)	TA/22	Rocker, inlet (right-hand)	1	7, 88	17 6
D12/99(LH)	TA/39	Rocker, inlet (left-hand)	1	7, 88	17 6
D12/100(RH)	TA/23	Rocker, exhaust (right-hand)	1	7, 88	17 6
D12/100(LH)	TA/40	Rocker, exhaust (left-hand)	1	7, 88	17 6
D12/104	TA/34	Rocker ball end	4	7, 88	3 6
D12/803	TA/25	Rocker adjuster screw	4	7, 88	3 0
D12/804	TA/26	Rocker adjuster screw	4	7, 88	6
D12/97	TA/20	Rocker shaft	4	7, 88	12 0
D12/945	TA/19	Rocker shaft locking plate	4	7, 88	1 0
D12/946	TA/18	Rocker shaft fixing plate	4	7, 88	1 0
D12/947	—	Rocker shaft locking plate washer	4	7, 88	3
D12/948	—	Rocker shaft fixing plate washer	4	7, 88	3
K12/949	TA/17	Rocker shaft fixing plate bolt	8	7, 88	8
D12/950	TA/24	Rocker shaft spring washer	4	7, 88	4
D12/951	TA/21	Rocker shaft thrust washer	4	7, 88	6
D12/93F	TA/14	Rocker box cover (front)	2	7, 88	7 6
K12/952	TA/37	Rocker box cover stud (front)	4	7, 88	6
D12/953	TA/15	Rocker box cover stud nut (front)	4	7, 88	6
D13/95F	TA/16	Rocker box cover washer (front)	2	7, 88	6
D12/93R	TA/6	Rocker box cover (rear)	1	7, 88	7 6
K12/954	—	Rocker box cover stud (rear)	1	7, 88	8
D12/955	TA/4	Rocker box cover stud nut (rear)	1	7, 88	8
D12/956	TA/5	Rocker box cover stud nut washer (rear)	1	7, 88	3
D12/95R	TA/7	Rocker box cover washer (rear)	1	7, 88	6
DYNAMO DRIVE PARTS AND SECURING FITTINGS					
F12/957	TA/90	Fibre gear for dynamo drive	1	7, 88	1 2 6
D12/1012	TA/103	Fibre gear distance piece	1	7, 88	2 0
D12/958	TA/102	Friction spring for fibre gear	1	7, 88	2 3
D12/959	—	Plate for friction spring	1	7, 88	6
D12/960	—	Locating peg for friction spring	1	7, 88	1 0
D12/1013	TA/100	Dynamo steel driven pinion	1	7, 88	10 0
D12/961	TA/88	Dynamo drive chain	1	7, 88	11 8
200737	—	Brush set for dynamo (per set)	1	7, 88	3 6
D12/962	—	Dynamo securing strap	1	7, 88	2 6
D12/963	—	Dynamo securing strap dowel	1	7, 88	6
D12/964	—	Dynamo securing strap roller	1	7, 88	1 0
D12/965	—	Dynamo securing strap screw	1	7, 88	6
D12/966	TA/105	Stud securing dynamo to crankcase	3	7, 88	1 0
D12/967	TA/104	Nut for stud securing dynamo to crankcase	3	7, 88	4
D12/968	TA/99	Tensioner slipper for dynamo chain	1	7, 88	2 6
D12/969	TA/108	Stud securing chain tensioner to crankcase	2	7, 88	6
D12/970	TA/97	Stud nut securing chain tensioner to crankcase	2	7, 88	4
D12/971	TA/98	Plate for chain tensioner	2	7, 88	6
T2184	TA/111	Dynamo sealing washer	1	7, 88	6
MAGNETO AND DRIVE PARTS					
D12/113	—	Magneto chain	1	7, 88	11 8
47508	—	Magneto sprocket with automatic advance and retard unit	1	7, 88	2 10 0
458368	—	Pick-up assembly (left-hand)	1	7, 88	5 3
458367	—	Pick-up assembly (right-hand)	1	7, 88	5 3
451260	—	Brush and spring for pick-up	2	7, 88	10 0
458619	—	Contact breaker cover	1	7, 88	5 9
470534	—	Contact breaker	1	7, 88	1 4 2
470609	—	Contact breaker points (set)	1	7, 88	8 10

PART No.	PLATE No.	DESCRIPTION	QTY.	USED ON	PRICE EACH
MAGNETO AND DRIVE PARTS—cont.					£ s. d.
455191	—	Brush spring and holder (magneto to earth)	1	7, 88	1 2
455190	—	Brush and spring (magneto to earth) ..	1	7, 88	10
T2089	TA/106	Bolt securing magneto to crankcase ..	3	7, 88	6
E3223	—	Nut for bolt securing magneto to crankcase	3	7, 88	4
E5456	—	Washer for bolt securing magneto to crankcase	3	7, 88	3
OIL PUMP PARTS					
D12/128	TA/82	Dry sump gear pump complete	1	7, 88	3 0 0
A2/129	TA/85	Dry sump gear pump spindle nut	1	7, 88	5
D12/130	TA/84	Pump spindle worm gear wheel	1	7, 88	6 6
A2/131	—	Pump spindle worm gear wheel key ..	1	7, 88	3
A2/132	TA/81	Pump body and timing cover connecting bush	1	7, 88	8
D12/133	TA/80	Pump body and timing cover connection washer	1	7, 88	4
D12/134	TA/83	Mainshaft pump driving worm	1	7, 88	7 6
E4440	—	Dry sump gear pump crankcase stud ..	2	7, 88	9
E3231	—	Dry sump gear pump crankcase stud nut ..	2	7, 88	4
VALVES, GUIDES, SPRINGS etc.					
D12/142	—	Valve (inlet)	2	7, 88	12 0
D12/143	TA/33	Valve (exhaust)	2	7, 88	12 0
K12/140	TA/30	Valve guide	4	7, 88	6 6
K12/145	TA/29	Valve spring (inner)	4	7, 88	1 0
K12/146	TA/31	Valve spring (outer)	4	7, 88	2 0
H12/16339	—	Valve spring heating resisting washer ..	4	7, 88	9
D12/148	TA/32	Valve spring cup bottom	4	7, 88	1 0
D12/147	TA/28	Valve spring cup top	4	7, 88	3 0
D12/149	TA/27	Valve cotter (2 halves on cotter)	4	7, 88	1 0
CYLINDER HEAD, BARREL, STUDS AND BOLTS					
H12/135	TA/45	Cylinder barrel	1	7, 88	9 0 0
K12/136	TA/44	Cylinder head	1	7, 88	14 0 0
D12/137	TA/43	Cylinder head gasket	1	7, 88	5 0
D12/157	TA/49	Cylinder base washer	1	7, 88	10
D12/972	TA/36	Cylinder head and barrel bolt (long), $\frac{3}{8}$ in...	4	7, 88	1 0
D12/973	TA/38	Cylinder head and barrel bolt (short), 3in.	1	7, 88	10
D12/974	TA/35	Cylinder head and barrel bolt washer ..	5	7, 88	3
D12/975	—	Cylinder head and barrel stud (front) $\frac{5}{8}$ in.	2	7, 88	1 0
D12/976	—	Cylinder head and barrel stud nut (front) $\frac{5}{8}$ in.	2	7, 88	6
K12/977	TA/42	Cylinder head and barrel stud (front and rear), $\frac{3}{8}$ in.	3	7, 88	6
D12/978	—	Cylinder head and barrel stud nut (front), $\frac{3}{8}$ in.	2	7, 88	6
D12/979	—	Cylinder head and barrel stud nut (rear), $\frac{3}{8}$ in.	1	7, 88	6
D12/980	TA/2	Stud for carburetter fixing	2	7, 88	4
D12/981	—	Stud nut for carburetter fixing	2	7, 88	3
D12/982	—	Stud washer for carburetter fixing	2	7, 88	2
D12/727	TA/1	Paper washer for carburetter flange ..	1	7, 88	3
D12/983	TA/3	Cylinder head carburetter manifold ..	1	7, 88	10 0
D12/984	—	Fibre distance piece for manifold	2	7, 88	2 6
K12/985	—	Stud securing manifold to cylinder head ..	4	7, 88	6
D12/986	—	Nut for stud securing manifold	4	7, 88	3
D12/987	—	Washer for stud securing manifold	4	7, 88	2
PISTONS AND RINGS					
D12/702(LH)	TA/56	Piston complete, L.H.	1	7, 88	1 17 6
D12/702(RH)	TA/54	Piston complete, R.H.	1	7, 88	1 17 6
D12/160(LH)	—	Piston only, L.H.	1	7, 88	1 5 0
D12/160(RH)	—	Piston only, R.H.	1	7, 88	1 5 0
D12/161	—	Piston ring (compression)	4	7, 88	2 0

PART No.	PLATE No.	DESCRIPTION	QTY.	USED ON	PRICE EACH
PISTONS AND RINGS—cont.					£ s. d.
D12/162	—	Piston ring (scraper)	2	7, 88	2 6
D12/163	—	Gudgeon pin	2	7, 88	5 0
D12/164	—	Gudgeon pin circlip	4	7, 88	6
Pistons and rings can be supplied in the following oversizes : .005, .010, .020, .030, .040. State size when ordering.					
D12/158	TA/57	Connecting rod with small end bush big end bearing and bolts	2	7, 88	2 15 0
D12/159	—	Small end bush	2	7, 88	3 6
D12/27	TA/119	Big end bearing (2 halves one rod)	2	7, 88	6 0
D13/988	TA/118	Connecting rod big end cap (Not supplied separately.)	2	7, 88	15 0
D12/989	TA/63	Big end cap bolt	4	7, 88	2 3
D12/990	TA/64	Big end cap bolt washer	4	7, 88	3
D12/991	TA/65	Big end cap bolt nut	4	7, 88	2 0
D12/992	—	Big end cap bolt split cotter	4	7, 88	2
AMAL CARBURETTER					
376/19	—	Carburetter complete with cables less twist grip	1	7, 88	3 15 0
376/1"	—	Mixing chamber body	1	7, 88	1 0 0
376/056	—	Jet block	1	7, 88	10 0
376/070	—	Locating peg for jet block	1	7, 88	6
376/067	—	Washer for jet block	1	7, 88	2
376/064	—	Mixing chamber top	1	7, 88	3 0
376/065	—	Mixing chamber top cap ring	1	7, 88	3 0
4/235	—	Cap spring for top	1	7, 88	10
4/241	—	Fixing screw for cap springs	1	7, 88	2
4/035	—	Cable adjuster	1	7, 88	7
6/132A	—	Cable ferrules (top hat)	1	7, 88	3
4/137A	—	Plug screw	1	7, 88	3
376/060	—	Throttle valve	1	7, 88	7 0
376/061	—	Throttle valve spring	1	7, 88	6
376/063	—	Taper needle	1	7, 88	2 3
4/230	—	Needle clip	1	7, 88	6
376/062	—	Air valve	1	7, 88	4 6
6/047	—	Air valve guide	1	7, 88	1 3
4/046	—	Air valve spring	1	7, 88	4
376/101	—	Rod control air valve assembly	1	7, 88	9 0
30/064	—	Click spring for rod control air valve assembly	1	7, 88	3
376/072	—	Needle jet	1	7, 88	2 9
376/100	—	Main jet (230)	1	7, 88	1 0
376/073	—	Main jet holder	1	7, 88	4 0
376/074	—	Main jet holder washer	1	7, 88	2
376/075	—	Main jet cover nut	1	7, 88	1 0
376/076	—	Pilot jet	1	7, 88	1 0
376/095	—	Pilot jet cover nut	1	7, 88	9
116/162	—	Pilot jet cover nut washer	1	7, 88	2
332/017	—	Air adjusting screw	1	7, 88	9
4/148	—	Air adjusting screw spring	1	7, 88	3
376/068	—	Throttle stop screw	1	7, 88	9
376/069	—	Throttle stop screw spring	1	7, 88	3
376/066	—	Air intake tube	1	7, 88	3 10
376/083	—	Float complete	1	7, 88	5 0
376/085	—	Float hinge spindle	1	7, 88	6
376/094	—	Float spindle bush	1	7, 88	4
376/089	—	Float needle	1	7, 88	1 6
376/088	—	Needle seating	1	7, 88	2 6
14/175	—	Needle seating washer	1	7, 88	2 2
376/097	—	Banjo single	1	7, 88	2 0
14/175	—	Banjo washer	1	7, 88	2
376/091	—	Banjo bolt	1	7, 88	6
376/092	—	Banjo bolt washer	1	7, 88	2
376/086	—	Tickler	1	7, 88	1 0
343/011	—	Tickler body	1	7, 88	1 3
376/087	—	Tickler spring	1	7, 88	2



PART No.	PLATE No.	DESCRIPTION	QTY.	USED ON	PRICE EACH
AMAL CARBURETTOR—cont.					£ s. d.
376/077	—	Float chamber cover	1	7, 88	2 6
376/078	—	Float chamber cover joint	1	7, 88	4
376/079	—	Float chamber cover screws	1	7, 88	2
376/093	—	Filter gauze	1	7, 88	8
EXHAUST PIPE, SILENCER AND FITTINGS					
H12/169(RH)	—	Silencer (right-hand)	1	7, 88	3 5 0
H12/169 (LH)	—	Silencer (left-hand)	1	7, 88	3 5 0
H12/165(RH)	—	Exhaust pipe (right-hand)	1	7	1 15 0
H12/2/165(RH)	—	Exhaust pipe (right-hand)	1	88	1 15 0
H12/165(LH)	—	Exhaust pipe (left-hand)	1	7	1 15 0
H12/2/165(LH)	—	Exhaust pipe (left-hand)	1	88	1 15 0
D12/167	—	Exhaust pipe locking nut, cylinder head ..	2	7, 88	8 0
D12/166	—	Exhaust pipe C and A washer	2	7, 88	6
H12/168	—	Silencer clip front end	2	7, 88	2 6
E3801	—	Bolt for clip	2	7, 88	5
E3231	—	Nut for bolt	2	7, 88	4
I1796	—	Washer for bolt	2	7, 88	3
NORTON ROAD HOLDER FRONT FORKS AND FITTINGS					
D12/170	—	Road-holder fork complete.. .. .	1	7	25 0 0
H12-2/170	—	Road-holder fork complete.. .. .	1	88	25 0 0
B2/605	JJ.23	Main tube	2	7	2 0 0
H12-2/605	—	Main tube	2	88	2 0 0
B2/606	JJ.32	Main tube bottom bush	2	7, 88	6 6
B2/607	JJ.35	Main tube bottom bush locking nut	2	7	3 9
B2/608	JJ.34	Main tube bottom bush locking washer ..	2	7	3
E11M/1044	JJ.90	Main tube bottom bush circlip	2	88	6
D12/609	JJ.33	Fork end (left-hand)	1	7	5 5 0
H12-2/609	JJ.92	Fork end (left-hand)	1	88	5 5 0
I3433	JJ.42	Fork end hub spindle pinch stud, near side	1	7, 88	6
I3434	JJ.43	Fork end hub spindle pinch stud nut ..	1	7, 88	4
I1776	—	Pinch stud washer	1	7, 88	3
D12/611	—	Fork end (right-hand)	1	7	5 5 0
412/2/611	—	Fork end (right-hand)	1	88	5 5 0
B2/612	JJ.39	Fork end drain plug	2	7, 88	4
B2/613	JJ.38	Fork end drain plug washer	2	7, 88	2
B2/614	JJ.31	Main tube top sleeve bush	2	7, 88	12 6
B2/615	JJ.28	Main tube top sleeve bush lock ring ..	2	7	7 6
FI1M2/615	JJ.91	Main tube top sleeve bush lock ring with cup	2	88	17 6
D3T/616	JJ.29	Super oil seal	2	7, 88	6 6
B2/617	JJ.30	Super oil seal paper washer	2	7, 88	2
E2/620	JJ.26	Main spring	2	7	15 0
FI1M2/620	JJ.65	Main spring	2	88	15 0
B2/619	JJ.22	Main spring leather washer (top)	2	7	6
B2/621	JJ.27	Main spring leather washer (bottom) ..	2	7	3
B2/622	JJ.19	Spring cover tube (top)	2	7	4 0
H12-2/622	JJ.84	Spring cover tube (top)	2	88	4 0
B2/623	JJ.20	Spring cover tube top securing plate ..	2	7, 88	1 0
B2/624	JJ.21	Spring cover tube top securing plate screw	6	7, 88	3
B2/625	JJ.24	Spring cover tube (bottom)	2	7	6 6
B2/626	JJ.25	Spring cover tube (bottom) securing screw	4	7	2
B2/627	JJ.36	Oil damper rod	2	7	15 0
B2/628	JJ.37	Oil damper rod fibre washer	1	7	3
C2/629	JJ.41	Oil damper rod plain washer	1	7	3
C2/630	JJ.40	Oil damper rod bolt	1	7	3
FI1M2/627	JJ.93	Oil damper tube	2	88	17 6
FI1M2/630	JJ.64	Oil damper tube bolt	2	88	9
E11M/1045	JJ.85	Oil damper tube cap	2	88	2 6
E11M/1046	JJ.87	Oil damper valve cup	2	88	2 0
E11M/1047	JJ.80	Oil damper valve cup slotted ring ..	2	88	2 0
E11M/1048	JJ.86	Oil damper valve cup slotted ring location peg	2	88	3
FI1M2/1049	JJ.64	Oil damper main rod	2	88	5 0
I3968	JJ.60	Oil damper main rod nut (top)	2	88	8

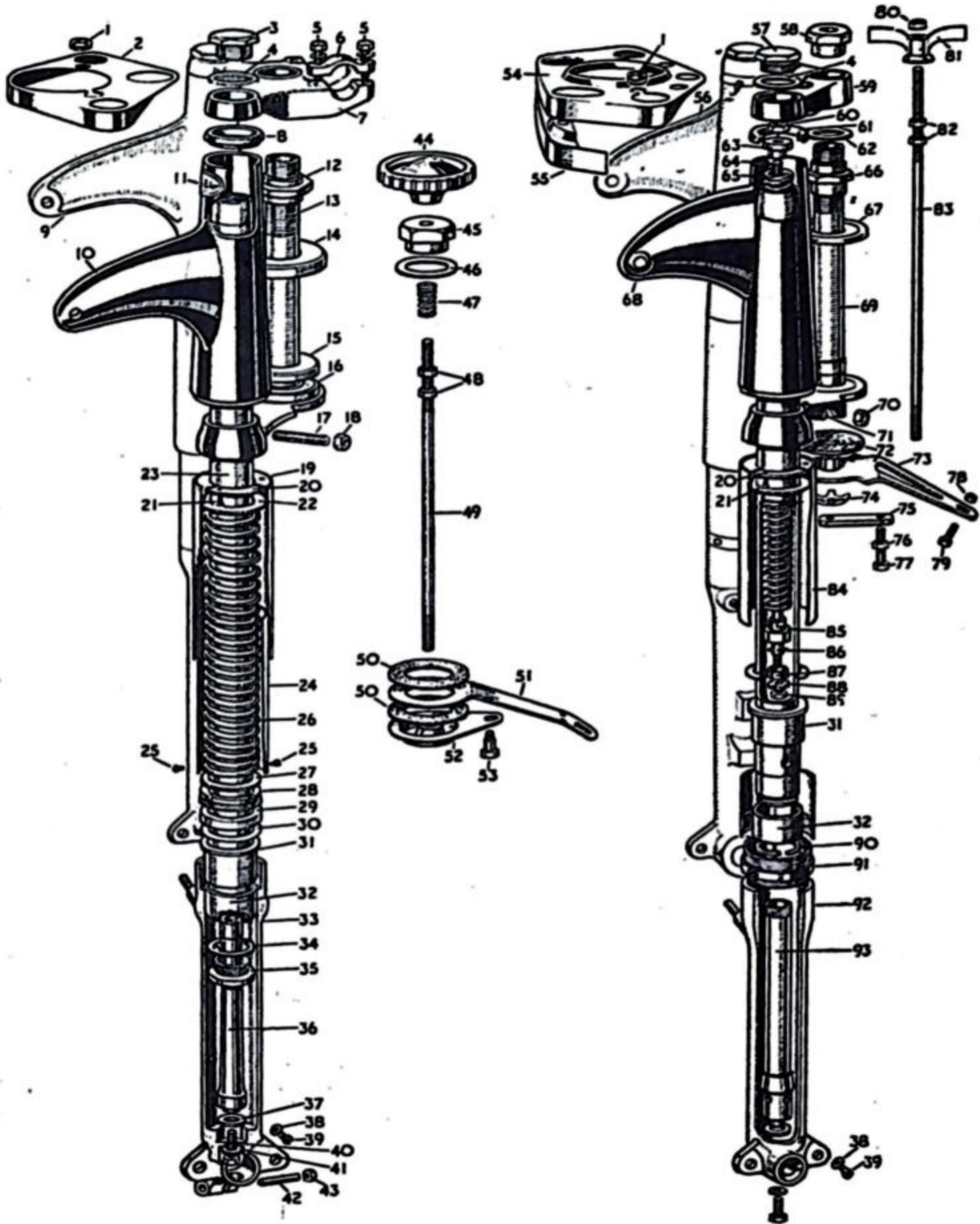


PLATE JJ

PART No.	PLATE No.	DESCRIPTION	QTY.	USED ON	PRICE EACH
NORTON ROAD-HOLDER FRONT FORKS AND FITTINGS—cont.					£ s. d.
E3231	JJ.89	Oil damper main rod nut (bottom)	2	88	4
B2/631	JJ.2	Speedometer panel	1	7	7 6
H12-2/631B	JJ.55	Speedometer panel (bottom half)	1	88	5 0
H12-2/631T	JJ.54	Speedometer panel (top half)	1	88	7 6
B2/632	JJ.1	Speedometer panel control cable grummet	2	7, 88	6
B2/633	JJ.3	Main tube filler and retaining plug	2	7	5 0
H12-2/633	JJ.57	Main tube filler and retaining plug	2	88	5 0
B2/634	JJ.4	Main tube filler and retaining plug washer	2	7, 88	9
B2/635	JJ.9	Main tube top cover and lamp bracket (left-hand)	1	7	1 1 0
H12-2/635	JJ.68	Main tube top cover and lamp bracket (left-hand)	1	88	1 1 0
B2/636	JJ.10	Main tube top cover and lamp bracket (right-hand)	1	7	1 1 0
H12-2/636	JJ.56	Main tube top cover and lamp bracket (right-hand)	1	88	1 1 0
B2/637	JJ.11	Main tube top cover name plate	2	7, 88	1 6
B2/638	—	Main tube top cover name plate rivet (per set)	2	7, 88	3
B2/639	JJ.8	Main tube top cover rubber ring	2	7	1 6
F11M2/639	JJ.61	Main tube top cover rubber ring	2	88	1 6
B2/201	JJ.44	Steering damper adjuster	1	7	6 0
B2/203	JJ.49	Steering damper adjuster rod	1	7	2 0
B2/202	JJ.47	Steering damper adjuster rod spring	1	7	1 0
B2/640	JJ.48	Steering damper adjuster rod spring locknut	1	7	4
B2/207	JJ.50	Steering damper friction disc	2	7	3 0
D12/206	—	Steering damper friction and anchor plate	1	7	6 6
B2/208	JJ.52	Steering damper bottom plate	1	7	4 0
B2/641	JJ.53	Steering damper bottom plate bolt	1	7	6
H12-2/206	JJ.73	Front fork stop and anchor plate	1	88	6 6
H12-2/207	JJ.72	Fibre washer for fork stop and anchor plate	1	88	3 0
I6508	JJ.79	Fork stop and anchor plate frame securing bolt	1	88	8
E3229	JJ.78	Nut for bolt	1	88	4
E5379	—	Washer for bolt	1	88	3
B2/172	JJ.13	Fork crown and column	1	7	3 0 0
F11M2/172	JJ.69	Fork crown and column	1	88	3 0 0
B2/642	JJ.17	Fork crown main tube clamping stud	2	7	6
B2/643	JJ.18	Fork crown main tube clamping nut	2	7	4
F11M2/642	JJ.71	Fork crown main tube clamping stud	2	88	6
F11M2/643	JJ.70	Nut for stud	2	88	4
B2/173A	—	Fork crown and column ballrace	1	7	7 6
B2/644	JJ.14	Fork head clip ballrace cover	1	7	1 0
F11M2/644	JJ.67	Fork head clip ballrace cover	1	88	1 0
D2/174	JJ.7	Fork head clip	1	7	1 12 6
F11M2/174	JJ.59	Fork head clip	1	88	1 12 6
B2/173B	—	Fork head clip ballrace	1	7	7 6
D2/175	JJ.6	Handlebar half clip	2	7	2 0
D2/176	JJ.5	Handlebar half clip pin	4	7	10
B2/645	JJ.12	Fork head race adjuster nut	1	7	9 0
F11M2/645	JJ.66	Fork head race adjuster nut	1	88	9 0
B2/205	JJ.45	Fork crown and column locknut	1	7	5 0
H12-2/205	JJ.58	Fork crown and column locknut	1	7	1 0
B2/646	JJ.46	Fork crown and column locknut washer	1	7	1 0
F11M2/646	JJ.62	Fork crown and column locknut distance piece	1	88	1 0
I7078	—	Rubber grummett for crown and column locknut	1	88	6
HANDLEBAR AND FITTINGS					
K12/211	—	Handlebar bend	1	7, 88	1 14 7
H12-2/175	—	Handlebar fork mounting bracket	2	88	7 6
T2101	—	Nut for securing bracket	2	88	6
A2/278	—	Rubbers for mounting bracket	4	88	4
C163	—	Steel cups for mounting rubbers	4	88	6
I6858	—	Rubber sleeve for mounting bracket	2	88	9

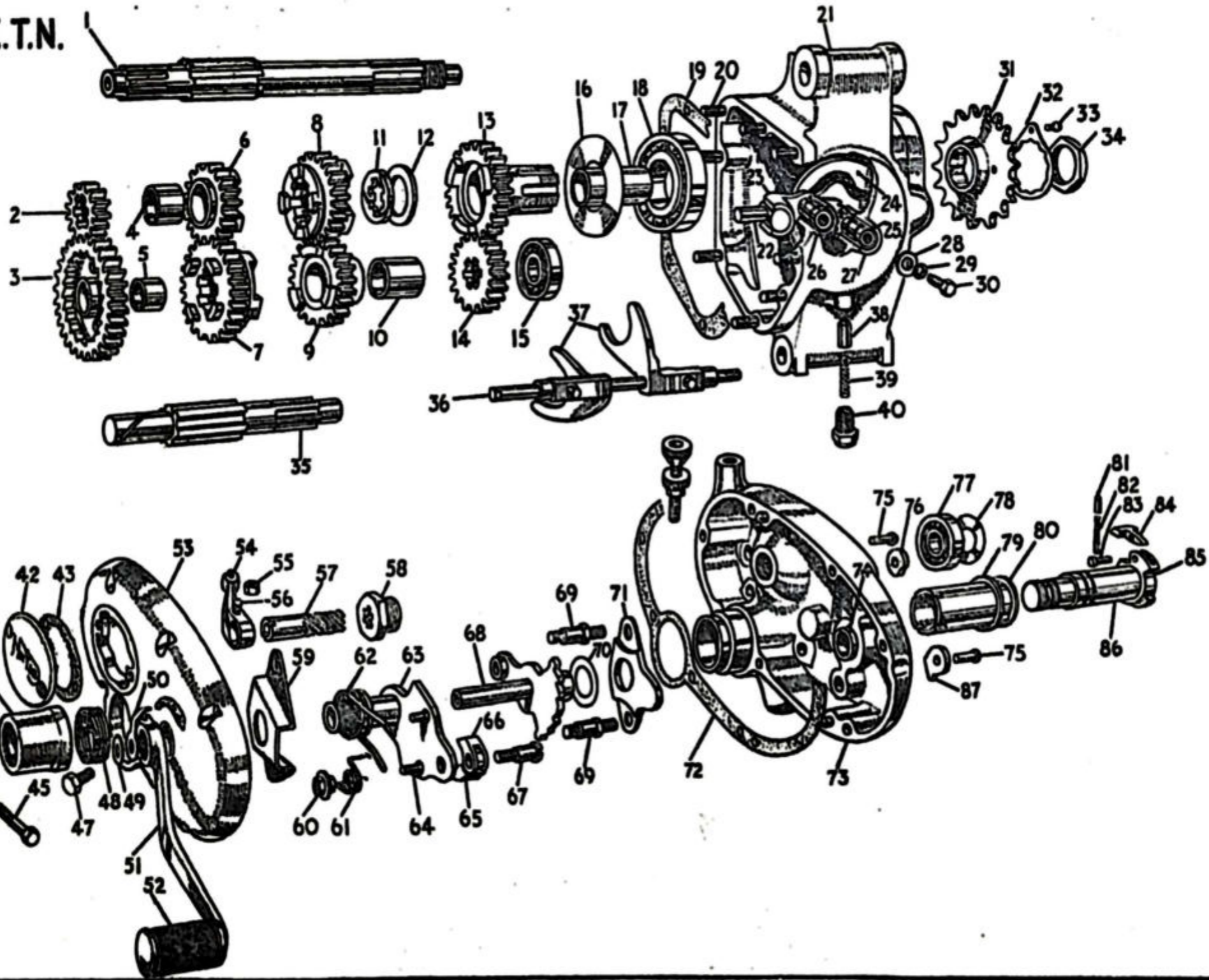
PART No.	PLATE No.	DESCRIPTION	QTY.	USED ON	PRICE EACH
AIR CONTROL LEVER					£ s. d.
A2/216	—	Air control lever assembly complete ..	1	7,88	16 8
A2/217	—	Air control lever only	1	7,88	6 0
A2/218	—	Air control lever body	1	7,88	5 0
A2/219	—	Air control lever top screw	1	7,88	1 0
A2/220	—	Air control lever cap	1	7,88	1 8
A2/221	—	Air control lever cap spring washer ..	1	7,88	4
A2/222	—	Air control lever clip	1	7,88	1 0
A2/223	—	Air control lever clip screw	2	7,88	5
FRONT BRAKE AND CLUTCH CONTROL LEVERS					
D12/224	—	Front brake lever assembly complete ..	1	7,88	19 0
D12/225	—	Front brake lever only	1	7,88	9 0
D12/226	—	Clutch lever assembly complete	1	7,88	19 0
D12/227	—	Clutch lever only	1	7,88	9 0
A2/228	—	Front brake or clutch lever body	1	7,88	7 0
A2/222	—	Front brake or clutch lever clip	2	7,88	1 0
A2/223	—	Front brake or clutch lever clip screw ..	4	7,88	5
A2/229	—	Front brake or clutch lever pivot pin ..	2	7,88	1 0
A2/230	—	Front brake or clutch lever pivot pin nut	2	7,88	3
A2/873	—	Front brake or clutch lever pivot pin washer	2	7,88	2
TWIST GRIP					
A2/237	—	Twist grip complete	1	7,88	1 2 3
A2/238	—	Twist grip top half clip	1	7,88	6 0
A2/239	—	Twist grip bottom half clip	1	7,88	6 0
A2/240	—	Twist grip clip fixing pin	2	7,88	8
A2/241	—	Twist grip control barrel	1	7,88	7 0
A2/242	—	Twist grip control barrel adjusting screw	1	7,88	5
A2/236	—	Twist grip control barrel adjusting screw nut	1	7,88	4
A2/243	—	Twist grip control barrel adjusting screw spring	1	7,88	1 0
A2/244	—	Twist grip cable stop	1	7,88	8
A2/245	—	Twist grip rubber	1	7,88	3 8
A2/246	—	Dummy grip to match twist grip	1	7,88	3 8
CONTROL CABLE ADJUSTERS AND NIPPLES					
A2/247	—	Front brake or clutch cable adjuster ..	2	7,88	5 0
A2/249	—	Air or throttle control cable nipple (handlebar end)	2	7,88	3
A2/251	—	Air or throttle control cable nipple (carburettor end)	2	7,88	3
A2/252	—	Clutch or front brake control cable nipple (handlebar end)	2	7,88	1 0
A2/253	—	Clutch control cable nipple (gearbox end)	1	7,88	3
A2/254	—	Front brake cable nipple (U clip end) ..	1	7,88	3
CONTROL CABLES					
D12/265	—	Clutch control cable complete	1	7,88	8 6
D12/266	—	Clutch control cable (outer)	1	7,88	5 0
D12/267	—	Clutch control cable (inner)	1	7,88	3 6
D12/268	—	Front brake control cable complete ..	1	7,88	12 6
A11M/269	—	Front brake control cable (outer)	1	7,88	9 0
D12/270	—	Front brake control cable (inner)	1	7,88	3 6
A2/259	—	Air control cable complete (inner and outer)	1	7,88	4 6
A2/260	—	Air control cable (outer)	1	7,88	2 6
A2/261	—	Air control cable (inner)	1	7,88	2 0
D12/262	—	Throttle control cable complete (inner and outer)	1	7,88	7 6
D12/263	—	Throttle control cable (outer)	1	7,88	5 6
D12/264	—	Throttle control cable (inner)	1	7,88	2 0
A2/709	—	Front brake cable U clip	1	7,88	6
A2/427	—	Front brake cable U clip pin	1	7,88	4
A2/195	—	Front brake cable U clip pin cotter ..	1	7,88	2

PART No.	PLATE No.	DESCRIPTION	QTY.	USED ON	PRICE EACH
PETROL TANK AND FITTINGS					£ s. d.
K12/274	—	Petrol tank	1	7	13 15 0
D12/841	—	Rubber buffers front mounting	2	7	1 0
D12/279F	—	Rubber buffer cup front mounting	2	7	1 6
I4356	—	Distance tube front mounting	1	7	9
D12/837	—	Bolt tank front mounting	1	7	1 6
E3224	—	Nut for front mounting bolt	1	7	4
E5376	—	Washer for front mounting bolt	2	7	3
D12/838	—	Rear tank mounting bolt	1	7	1 6
E3223	—	Nut for rear tank mounting bolt	1	7	4
I4357	—	Rear tank mounting rubbers (shouldered)	2	7	6
A2/278	—	Rear tank mounting rubber (plain)	2	7	4
A2/279	—	Cup washer for plain rubber washer	4	7	6
D12/289	—	Petrol tank frame top tube packing rubbers	2	7	2 6
K12/282(LH)	—	Knee grip (L.H.)	1	7	3 0
K12/282(RH)	—	Knee grip (R.H.)	1	7	3 0
I4434	—	Knee grip fixing pin	4	7	5
A2/285	—	Petrol tap	2	7	7 0
E5264	—	Petrol tap washer	2	7	3
K12/283	—	Petrol pipe	1	7	6 8
K12/280	—	Petrol tank filler cap	1	7, 88	7 6
A2/284	—	Cross over petrol pipe (copper)	1	7	6 8
A2/286	—	Adaptor for petrol tap	1	7	2 0
A2/287	—	Nut petrol tap (domed)	1	7	1 0
A2/288	—	Petrol pipe banjo fibre washer	4	7	3
I8678	—	Petrol tank badge	2	7, 88	7 6
I8679	—	Petrol tank badge fixing screws	4	7, 88	4
I8676	—	Petrol tank badge mounting rubber	2	7, 88	1 0
K12-2/274	—	Petrol tank	1	88	13 15 0
H12/2/1070	—	Petrol tank fixing strap	1	88	3 0
H12/2/1071	—	Petrol tank fixing strap rubber	1	88	6 0
H12/2/1072	—	Strap fixing roller (front)	1	88	6
A2/281	—	Strap fixing roller cotter (front)	2	88	2
H12-2/1073	—	Strap fixing roller (rear)	1	88	1 0
I6362	—	Strap rear attachment bolt	1	88	1 6
E5380	—	Strap rear attachment bolt washer	1	88	3
H12-2/1074	—	Strap rear attachment bolt roller (for tool box)	1	88	1 6
(See tool box for bracket.)					
H12/2/289	—	Petrol tank frame mounting rubbers	6	88	2 6
H12-2/282(LH)	—	Knee grip (left-hand)	1	88	3 0
H12-2/282(RH)	—	Knee grip (right-hand)	1	88	3 0
H12/2/285	—	Petrol tap (two level type)	1	88	10 0
H12-2/283	—	Petrol pipe (flexible)	1	88	11 0
OIL TANK AND FITTINGS					
K12/290	—	Oil tank (less fittings)	1	7	4 0 0
K12-2/290	—	Oil tank (less fittings)	1	88	4 0 0
K12/291	—	Oil tank filler cap	1	7, 88	6 6
I1940	—	Oil tank top fixing bolt	1	7	4
I2342	—	Oil tank top fixing bolt	1	88	5
E3229	—	Nut for bolt	1	88	4
E5379	—	Washer for bolt	1	88	3
E6453	—	Oil tank bottom fixing stud	2	7	6
E3223	—	Nut for stud	2	7	4
I3053	—	Oil tank bottom fixing stud	2	88	6
E3223	—	Nut for stud	2	88	4
I1796	—	Washer for stud	2	88	3
H12-2/1075	—	Oil tank and battery platform	1	88	10 0
H12-2/1076	—	Oil tank and battery platform rubber mat	1	88	5 0
I2343	—	Oil tank and battery platform attachment bolt	4	88	8
E3229	—	Nut for bolt	4	88	4
E5379	—	Washer for bolt	8	88	3
H2/298	—	Oil tank air release pipe	1	7, 88	4 0
I0995	—	Air release pipe nut	1	7, 88	4
H12/1055	—	Oil tank return pipe adaptor	1	7, 88	3 0
E3/1056	—	Fibre washer for adaptor	1	7, 88	3

PART No.	PLATE No.	DESCRIPTION	QTY.	USED ON	PRICE EACH
OIL TANK AND FITTINGS—cont.					£ s. d.
E3336	—	Oil tank drain plug	1	7, 88	8
E5264	—	Oil tank drain plug washer	1	7, 88	3
D12/292	—	Oil tank union with filter	1	7, 88	7 0
A2/293	—	Oil tank union washer	1	7, 88	3
OIL PIPES AND FITTINGS					
D12/993	—	Junction block for oil pipes	1	7, 88	6 0
D12/994	—	Hollow dowel for junction block	1	7, 88	9
D12/995	—	Paper washer for junction block	1	7, 88	3
D12/996	—	Sleeve nut for junction block	1	7, 88	1 6
D12/997	—	Washer for sleeve nut	1	7, 88	3
D12/295	—	Oil delivery pipe to junction block	1	7	3 6
H12-2/295	—	Oil delivery pipe to junction block	1	88	3 6
D12/296	—	Oil return pipe from junction block	1	7	3 6
H12-2/296	—	Oil return pipe from junction block	1	88	3 6
K12/699	TA/12	Oil pipe to rocker box	1	7, 88	7 6
D12/700	TA/13	Oil pipe to rocker box banjo bolt.. .. .	2	7, 88	2 0
D12/701	TA/11	Washer for banjo bolt	4	7, 88	3
GEARBOX SHELL					
D12/299	TN/21	Gearbox shell with studs	1	7	6 19 0
H12-2/299	—	Gearbox shell with studs	1	88	6 19 0
D12/300	TN/73	Gearbox end cover (inner)	1	7	2 15 0
H12-2/300	—	Gearbox end cover (inner)	1	88	2 15 0
D12/301	TN/53	Gearbox end cover (outer)	1	7, 88	15 0
D12/302	TN/42	Gearbox clutch worm inspection cover	1	7, 88	5 0
D12/647	—	Clutch worm inspection cover screw	2	7, 88	6
D12/1005	TN/19	Paper washer between shell and inner cover	1	7, 88	6
D12/1006	TN/72	Paper washer for outer cover	1	7, 88	6
D12/1007	TN/43	Joint washer for inspection cover	1	7, 88	4
D12/304	TN/20	Gearbox cover stud	8	7, 88	5
A2/307	—	Gearbox cover stud nut (plain)	5	7, 88	4
A11M/307	—	Gearbox cover stud nut (dome)	3	7, 88	4
A2/308	—	Gearbox stud spring washer	8	7, 88	3
A2/309	—	Gearbox outer plate fixing screw	7	7, 88	5
E3336	—	Gearbox oil drain plug	1	7, 88	8
I3765	—	Oil level plug	1	7, 88	8
I3833	—	Washer for oil level plug	1	7, 88	3
GEARBOX FIXING BOLTS					
D12/310	JY.47/JZ.25	Gearbox suspension bolt and nut	1	7, 88	6 0
D12/313	JY.53/JZ.17	Gearbox suspension bolt nut	1	7, 88	1 0
E5454	—	Gearbox suspension bolt washer	1	7, 88	4
A2/312	—	Gearbox bottom bolt and nut	1	7	3 0
A2/313	—	Gearbox bottom bolt nut	1	7	1 0
H12-2/312	JZ.29	Gearbox bottom bolt	1	88	2 6
H12-2/313	JZ.27	Gearbox bottom bolt nut	2	88	8
I1809	JZ.28	Gearbox bottom bolt washer	2	88	3
GEARBOX FRONT CHAIN ADJUSTER					
H2/314	—	Gearbox front chain adjuster eye bolt and nuts	1	7, 88	4 8
H2/1008	JY.48/JZ.16	Gearbox front chain adjuster bolt only	1	7, 88	4 0
E3223	JY.49/JZ.18	Gearbox front chain adjuster bolt nut	2	7, 88	4
GEARBOX PINIONS, SHAFTS AND BEARINGS					
A2/316	TN/18	Main gear wheel bearing complete	1	7, 88	1 0 7
A2/317	TN/16	Main gear wheel oil retaining washer between main gear wheel and bearing	1	7, 88	4
A2/318	—	Main gear wheel sleeve bearing rollers (per set)	13	7, 88	5 0
A2/319	TN/12	Main gear wheel sleeve bearing roller retaining washer	1	7, 88	2 0

PART No.	PLATE No.	DESCRIPTION	QTY.	USED ON	PRICE EACH
GEARBOX PINIONS, SHAFTS AND BEARINGS—cont.					£ s. d.
A2/320	—	Main gear wheel bearing oil retaining washer, between gearbox shell and bearing	1	7, 88	4
A2/321	TN/15/77	Mainshaft R.H. bearing or layshaft L.H. bearing	1	7, 88	13 4
A2/323	TN/78	Mainshaft bearing packing washer (end cover end)	1	7, 88	3
D12/324	TN/1	Main axle	1	7, 88	2 0 0
A2/325	TN/35	Layshaft	1	7, 88	1 16 8
E12/326	—	Main gear wheel with bronze bush	1	7, 88	2 0 0
E12/327	—	Main gear wheel bush (per pair)	1	7, 88	4 8
A2/328	TN/11	Main axle thrust washer	1	7, 88	5 0
A2/329	TN/8	Main axle sliding pinion	1	7, 88	1 10 0
A2/330	TN/6	Main axle free pinion	1	7, 88	1 6 0
A2/331	TN/2	Main axle pinion	1	7, 88	12 0
A2/332	TN/14	Layshaft pinion	1	7, 88	14 0
A2/333	TN/9	Layshaft free pinion	1	7, 88	1 3 4
A2/334	TN/7	Layshaft sliding pinion	1	7, 88	1 10 0
A2/335	TN/4	Bush for main axle free pinion	1	7, 88	4 0
A2/336	TN/10	Bush for layshaft free pinion	1	7, 88	5 0
A2/337	TN/3	Low gear and kickstart wheel with bronze bush	1	7, 88	1 13 4
A2/338	TN/5	Bronze bush for kickstart and low gear wheel	1	7, 88	4 8
A2/339	TN/37	Striker fork	2	7, 88	1 0 0
A2/340	TN/36	Striker fork shaft	1	7, 88	5 0
D12/341	TN/24	Cam plate	1	7, 88	1 0 0
D12/342	TN/25	Cam plate spindle	1	7, 88	13 4
D12/343	TN/23	Cam plate quadrant with spindle	1	7, 88	16 8
D12/344	TN/26/27	Cam plate or quadrant spindle bush	1	7, 88	5 0
A2/346	TN/28	Cam plate or quadrant spindle washer	2	7, 88	5
A2/347	TN/29	Cam plate or quadrant spindle spring washer	2	7, 88	3
D12/348	TN/30	Cam plate or quadrant spindle bolt	2	7, 88	5
F2/349	TN/22	Knuckle head for positive cam plate	1	7, 88	7 6
A2/350	TN/38	Index plunger for cam plate	1	7, 88	8
A2/351	TN/40	Indexing plunger bush	1	7, 88	2 4
A2/352	TN/39	Indexing plunger spring	1	7, 88	4
A2/372	—	Main axle nut	1	7, 88	1 0
A2/373	—	Axle nut lock washer	1	7, 88	3
KICKSTARTER PARTS					
A2/353	TN/86	Kickstarter axle with bronze bush	1	7	2 0 0
H12-2/353	—	Kickstarter axle with bronze bush	1	88	2 0 0
A2/354	—	Bronze bush for K.S. end of layshaft	1	7, 88	5 0
A2/354	TN/85	Bronze bush for K.S. end of layshaft	1	7, 88	5 0
A2/355	TN/79	Kickstarter axle cork washer	1	7, 88	4
A2/356	TN/84	Kickstarter pawl	1	7, 88	2 8
A2/357	TN/83	Kickstarter pawl pin	1	7, 88	5
A2/358	TN/46	Kickstarter return spring cover	1	7	2 4
H12-2/358	—	Kickstarter return spring cover	1	88	2 4
A2/359	TN/45	Kickstarter crank bolt	1	7, 88	5
A2/308	TN/44	Kickstarter crank bolt washer	1	7, 88	3
A2/360	TN/41	Kickstarter crank	1	7, 88	1 6 8
A2/367	TN/48	Kickstarter return spring	1	7, 88	2 4
B2/648	—	Kickstarter crank rubber	1	7, 88	2 0
A2/361	TN/76	Kickstarter cam	1	7, 88	8
A2/362	TN/75	Kickstarter cam or stop piece rivet	1	7, 88	3
A2/363	TN/87	Kickstarter stop piece	1	7, 88	10
A2/364	TN/80	Kickstarter bush	1	7	6 0
H12-2/364	—	Kickstarter bush	1	88	6 0
A2/365	TN/82	Kickstarter pawl spring	1	7, 88	4
A2/366	TN/81	Kickstarter pawl spring plunger	1	7, 88	8
GEARBOX AXLE SPROCKET					
E12/368	—	Axle sprocket (state size)	1	7, 88	1 2 0
A2/369	TN/34	Axle sprocket locking nut	1	7, 88	1 8

PLATE.T.N.



PART No.	PLATE No.	DESCRIPTION	QTY.	USED ON	PRICE EACH
----------	-----------	-------------	------	---------	------------

GEARBOX AXLE SPROCKET—cont.

£ s. d.

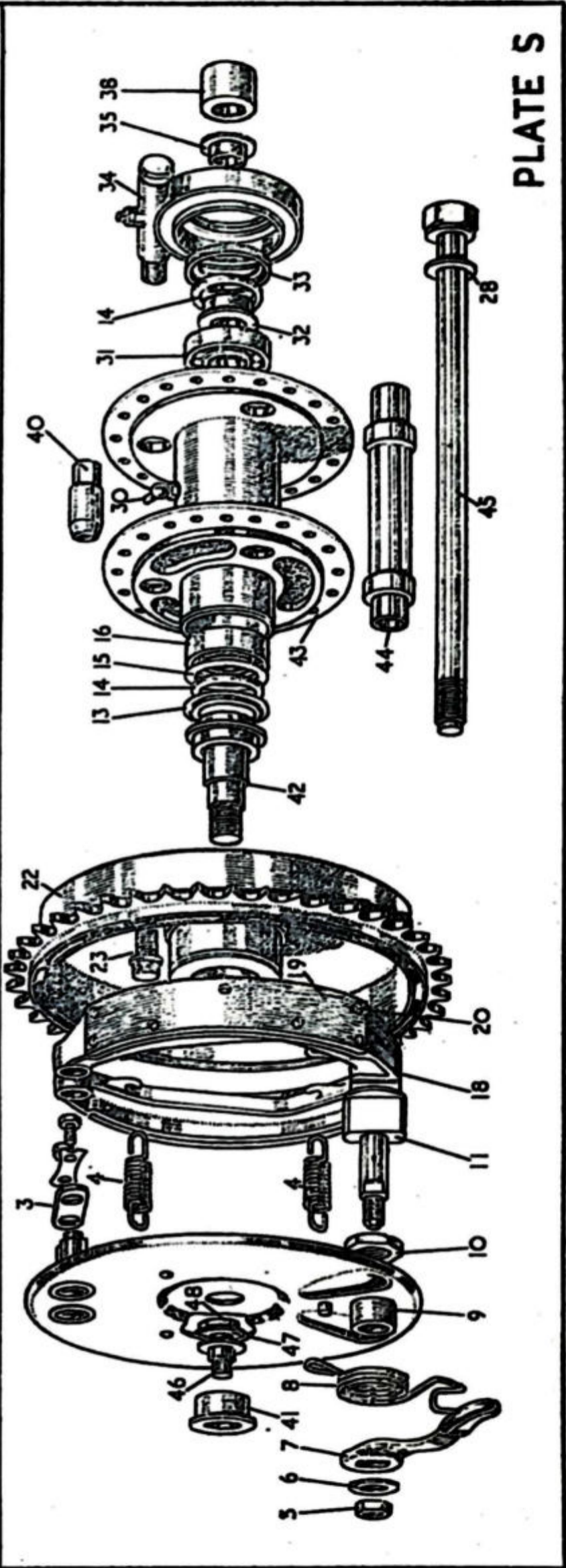
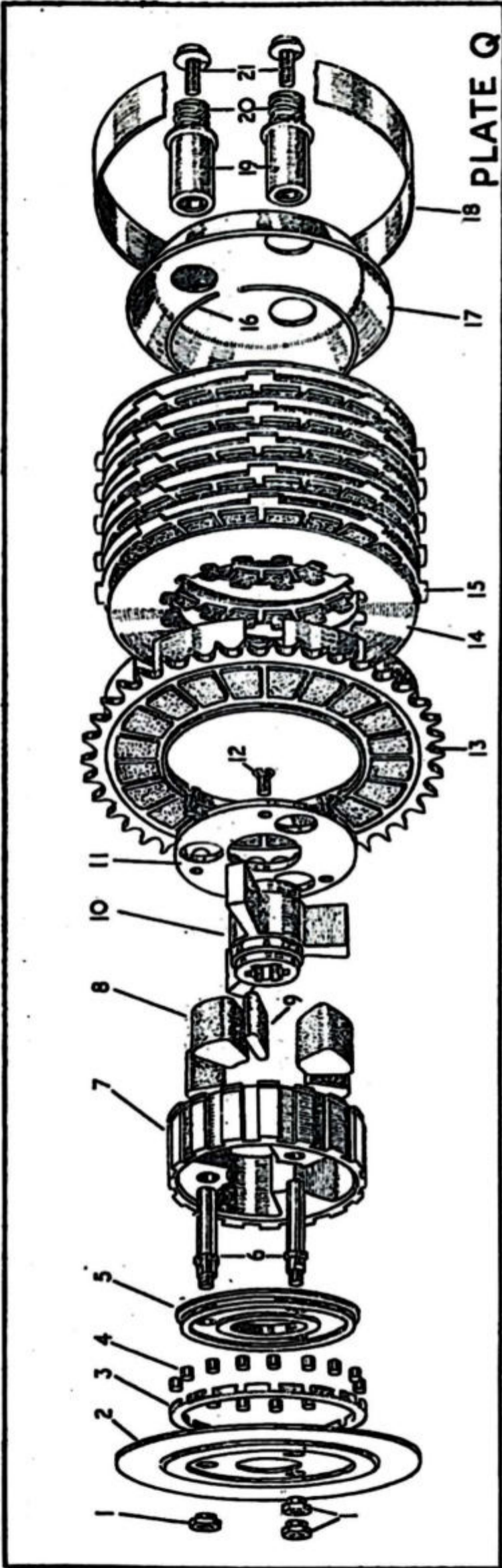
A2/370	TN/32	Axle sprocket nut locking plate	1	7, 88	8
A2/371	TN/33	Axle sprocket locking plate screw (Axle sprocket can be supplied 16T or 19T.)	1	7, 88	3

CLUTCH GROUP

D12/374	—	Clutch assembly complete	1	7, 88	12 5 0
D12/375	TN/57	Clutch worm	1	7, 88	5 0
D12/376	TN/58	Clutch worm nut	1	7, 88	13 0
D12/377	TN/54	Clutch worm lever	1	7, 88	5 0
D12/378	TN/56	Clutch worm lever stud	1	7, 88	6
GT/158	TN/55	Clutch worm lever stud nut	1	7, 88	3
A2/379	—	Clutch rod	1	7, 88	2 0 0
A2/380	—	Thrust pin	1	7, 88	2 0 0
D12/381	Q.2	Clutch back plate	1	7, 88	7 6
A2/382	Q.3	Clutch roller cage	1	7, 88	3 6
A2/383	Q.4	Clutch rollers (per set 13)	1	7, 88	6 6
A2/384	Q.13	Clutch sprocket with inserts	1	7, 88	2 5 0
A2/385	Q.7	Clutch body	1	7, 88	1 17 0
A2/386	Q.5	Clutch body back cover plate	1	7, 88	4 8
D12/387	Q.10	Clutch body centre	1	7, 88	17 0
A2/388	Q.8	Clutch body centre rubber buffers, large (per set 3)	1	7, 88	4 6
A2/389	Q.9	Clutch body centre rubber buffers, small (per set 3)	1	7, 88	4 6
A2/390	Q.11	Clutch body front cover plate	1	7, 88	6 0
A2/391	Q.12	Clutch body front cover plate screw	3	7, 88	3
A2/392	Q.14	Clutch plate steel	6	7, 88	5 6
A2/393	Q.15	Clutch friction plate with inserts	5	7, 88	11 0
A2/394	—	Clutch friction plate inserts (per 20)	100	7, 88	5 10
A2/395	—	Clutch sprocket inserts (per 20)	20	7, 88	9 2
A2/396	Q.18	Clutch plate cover	1	7, 88	4 6
A2/397	Q.17	Clutch outer plate	1	7, 88	5 6
A2/398	Q.16	Clutch plate retaining ring	1	7, 88	1 4
D2/399	Q.20	Clutch spring	3	7, 88	8
D2/400	Q.19	Clutch spring box	3	7, 88	1 6
D2/401	Q.6	Clutch spring stud	3	7, 88	1 6
A2/402	Q.1	Clutch spring stud nut	3	7, 88	4
A2/403	Q.21	Clutch spring screw	3	7, 88	4

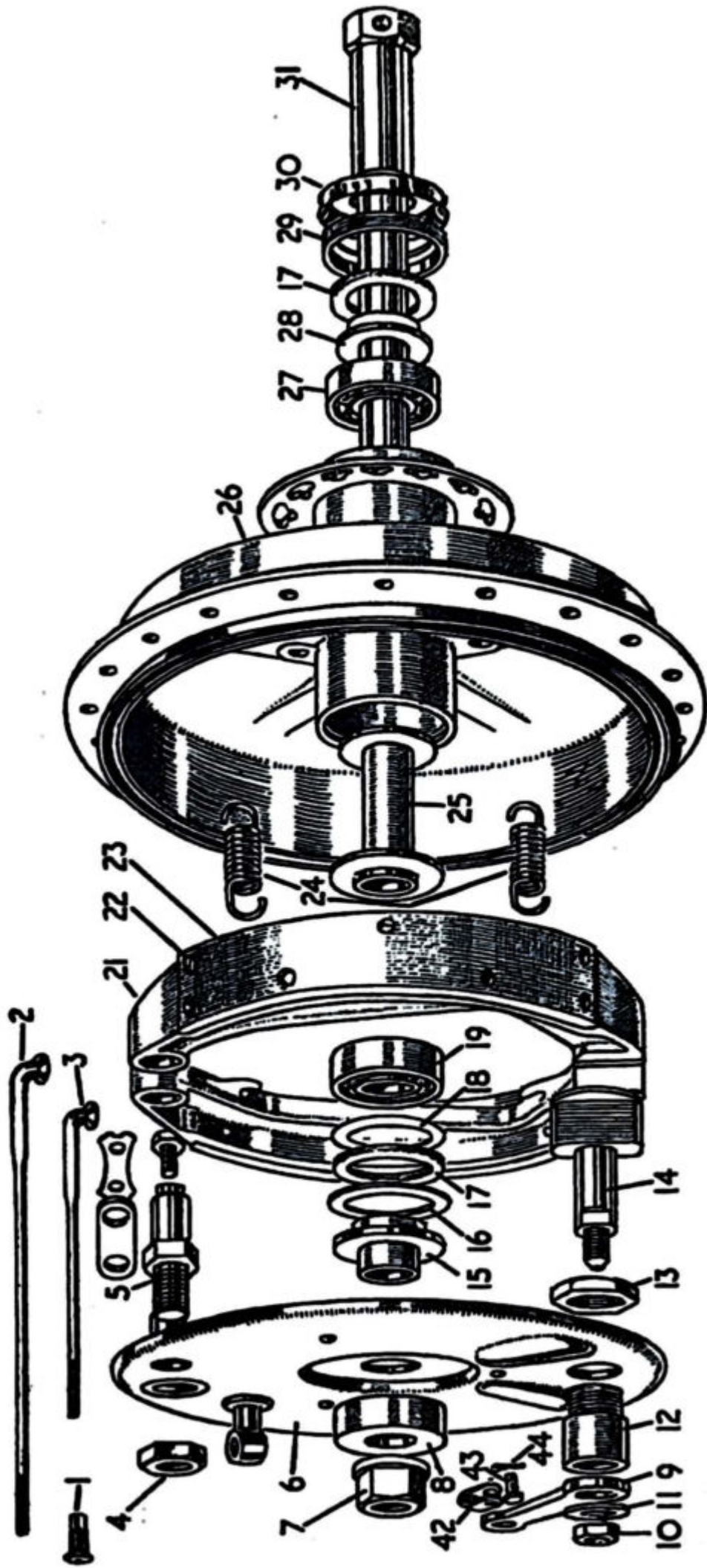
POSITIVE FOOTCHANGE PARTS

D12/404	TN/50	Gearbox change speed indicator	1	7, 88	1 6
D12/405	TN/47	Gearbox speed indicator bolt	1	7, 88	6
D12/864	TN/49	Change speed indicator bolt washer	1	7, 88	3
D12/406	TN/51	Gear lever	1	7, 88	1 0 0
D12/407	TN/52	Gear lever rubber	1	7, 88	2 0 0
A2/408	—	Gear lever securing bolt	1	7, 88	8
D12/409	TN/59	Return spring cover plate	1	7, 88	6 8
D12/410	TN/62	Return spring for pawl carrier	1	7, 88	1 4
D12/411	TN/69	Stop stud for pawl carrier	2	7, 88	1 4
A2/412F	—	Stop stud nut for pawl carrier	2	7, 88	8
A2/413	TN/64	Peg for pawl carrier	2	7, 88	4
D12/414	TN/63	Pawl carrier	1	7, 88	13 0
D12/415	TN/70	Pawl carrier spacing washer	1	7, 88	3
A2/417	TN/65	Pawl (plain)	1	7, 88	4 0
A2/418	TN/66	Pawl (forked)	1	7, 88	4 0
A2/419	TN/61	Pawl return spring	1	7, 88	1 0
A2/420	TN/67	Pawl pin	1	7, 88	1 6
A2/421	TN/60	Pawl pin nut	1	7, 88	8
D12/422	TN/68	Ratchet plate with spindle	1	7, 88	1 0 0
D12/423	TN/71	Cam plate	1	7, 88	4 0
D12/1010	TN/74	Bronze bush inner for gear change	1	7, 88	5 0
D12/1011	TN/74	Bronze bush outer for gear change	1	7, 88	5 0



PART No.	PLATE No.	DESCRIPTION	QTY.	USED ON	PRICE EACH
FRONT WHEEL AND FITTINGS					£ s. d.
J2/714	—	Front wheel complete with bearings and brake (less tyre)	1	7	14 5 0
K12-2/714	—	Front wheel complete with bearings and brake (less tyre)	1	88	16 0 0
J2/428	—	Front wheel with hub shell only	1	7	7 5 0
K12-2/428	—	Front wheel with hub shell only	1	88	9 0 0
J2/655	R.26	Hub shell and brake drum only	1	7	4 10 0
K12-2/655	KR.21	Hub shell only (front)	1	88	3 0 0
K12-2/463(F)	KR.56	Brake drum only (front)	1	88	3 0 0
I8214	—	Brake drum stud front	1	88	1 0 0
E6183	KR.19	Brake drum stud nut	1	88	6 0 0
A2/440	KR.24	Front hub bearing lockring	1	88	2 0 0
B2/452	R.31/KR.26	Front hub spindle	1	7, 88	15 0 0
B2/454	R.7/KR.3	Front hub spindle nut	1	7, 88	2 2 0
J2/457	R.6/KR.2	Front hub brake plate	1	7, 88	1 5 0
J2/459	R.9/KR.4	Front hub brake cam lever	1	7, 88	3 0 0
B2/657	R.5/KR.7	Front hub brake shoe fulcrum pin	1	7, 88	2 6 0
B2/658	R.4/KR.1	Front hub brake shoe fulcrum pin nut	1	7, 88	6 0 0
J2/441	R.28/KR.23	Front hub bearing distance piece plain side	1	7, 88	1 0 0
C2/656	R.25/KR.18	Front hub bearing distance tube	1	7, 88	1 6 0
B2/439	R.16	Front hub bearing felt washer steel plate (brake side)	1	7, 88	6 0 0
J2/442	R.30	Front hub bearing dust cap	1	7	3 0 0
K12-2/442	KR.25	Front hub bearing dust cap	1	88	3 0 0
J2/448(F)	R.14/KR.20	Front hub brake cam	1	7, 88	7 0 0
HUB BRAKE SHOES AND LININGS					
J2/443(F)	R.21/KR.8	Hub brake shoe with lining (front)	2	7, 88	1 2 6
H2/443(R)	S.18/KR.39	Hub brake shoe with lining (rear)	2	7, 88	1 0 6
J2/444(F)	R.23/KR.10	Hub brake shoe lining, front (per pair)	1	7, 88	18 4 0
H2/444(R)	S.19/KR.40	Hub brake shoe lining, rear (per pair)	1	7, 88	14 8 0
A2/445	S.30/KR.9	Hub brake shoe lining rivets (per set 14)	2	7, 88	1 0 0
PART COMMON TO FRONT AND REAR HUBS					
A2/435	R.27/S.31/KR.22	Hub bearing (plain side)	2	7, 88	12 7 0
A2/436	R.19/S.16/KR.17	Hub bearing (brake side)	2	7, 88	1 3 9
A2/440	R.29/S.33	Hub bearing lock ring, plain side	2	7	2 0 0
A2/437	R.17/S.14/KR.16	Hub bearing felt washer	4	7, 88	8 0 0
A2/438	R.18/S.15/KR.15	Hub bearing pen steel washer (brake side)	2	7, 88	4 0 0
A2/198	S.30	Hub grease nipple	2	7, 88	1 0 0
A2/446	R.24/S.4/KR.14	Hub brake shoe return spring	4	7, 88	1 0 0
I4454	S.3/KR.11	Hub brake shoe retaining plate	2	7, 88	1 0 0
I4506	KR.12	Retaining plate tab washer	2	7, 88	8 0 0
I4455	KR.13	Retaining plate bolts	4	7, 88	8 0 0
E3224	R.10/S.5/KR.5	Hub brake cam nut	2	7, 88	4 0 0
E5455	R.11/S.6/KR.6	Hub brake nut washer	2	7, 88	3 0 0
REAR WHEEL AND FITTINGS					
H12/715	—	Rear wheel complete with bearings and brake (less tyre)	1	7	16 0 0
K12-2/715	—	Rear wheel complete with bearings and brake (less tyre)	1	88	18 0 0
B2/649	—	Rear wheel with hub shell only	1	7	5 17 0
K12-2/649	—	Rear wheel with hub shell only	1	88	8 10 0
B2/433	S.43	Rear hub shell only	1	7	1 17 0
K12-2/433	KR.46	Rear hub shell only	1	88	4 15 0
I8348	KR.48	Rear hub shell diaphragm	1	88	7 6 0
I8396	KR.49	Rear hub shell diaphragm drive screws	3	88	2 0 0
A2/434	S.44	Hub shell bearing sleeve	1	7	6 0 0
K12-2/434	KR.32	Hub shell bearing sleeve	1	88	6 0 0
A2/441	S.32	Hub bearing distance piece, plain side	1	7	2 0 0
K12-2/441	KR.47	Hub bearing distance piece, plain side	1	88	2 0 0
K12-2/440	KR.50	Hub bearing lock ring	1	88	5 0 0
A2/439	S.13/KR.45	Hub bearing felt washer steel cup (brake side)	1	7, 88	1 0 0

PLATE. R.



PART No.	PLATE No.	DESCRIPTION	QTY.	USED ON	PRICE EACH
REAR WHEEL AND FITTINGS—cont.					£ s. d.
A2/460	S.45/KR.33	Rear hub spindle	1	7, 88	7 0
B2/659	S.28/KR.28	Rear hub spindle washer	2	7, 88	3
B2/660	S.35/KR.53	Rear hub spindle shouldered washer, plain side, for speedometer gearbox	1	7, 88	1 6
B2/461	S.38	Rear hub spindle distance piece (plain side)	1	7	2 0
K12-2/461	KR.54	Rear hub spindle distance piece (plain side)	1	88	2 0
A2/462	KR.38	Rear hub brake plate	1	7, 88	15 6
A2/465	S.41/KR.36	Rear hub brake plate distance piece (outer)	1	7, 88	2 0
E2/463(43T)	S.22	Rear hub brake drum and sprocket (43T)	1	7	3 0 0
K12-2/463	KR.42	Rear hub brake drum and sprocket	1	88	3 0 0
A2/464	S.42	Rear brake drum and sprocket fork end attachment piece	1	7	8 0
K12-2/464	KR.44	Rear brake drum and sprocket fork end attachment piece	1	88	8 0
A2/454	KR.27	Rear brake drum and sprocket fork end attachment nut	1	7, 88	2 2
A2/466	—	Rear hub brake torque arm	1	7, 88	5 6
A2/467	—	Rear hub brake torque arm spring washer	1	7, 88	3
E3812	—	Rear hub brake torque arm frame bolt	1	7, 88	1 0
A2/468	S.46/KR.37	Rear hub brake torque arm stud	1	7, 88	4 0
I1664	S.48	Rear hub brake torque arm stud nut	1	7, 88	5
E5375	S.47	Rear hub brake torque arm stud nut washer	1	7, 88	3
A2/448(R)	S.11/KR.41	Rear hub brake cam	1	7, 88	7 0
H12/469	KR.34	Rear hub brake cam lever	1	7, 88	12 6
H12/470	KR.35	Rear hub brake cam lever return spring	1	7, 88	1 0
A2/472	—	Rear brake drum stud	3	7	1 0
K12-2/472	KR.43	Rear brake drum stud	3	88	1 0
B2/451	S.40	Wheel sleeve nut	3	7	2 0
K12-2/451	KR.51	Wheel sleeve nut	3	88	2 0
I8371	KR.52	Wheel sleeve nut grommet	3	88	9

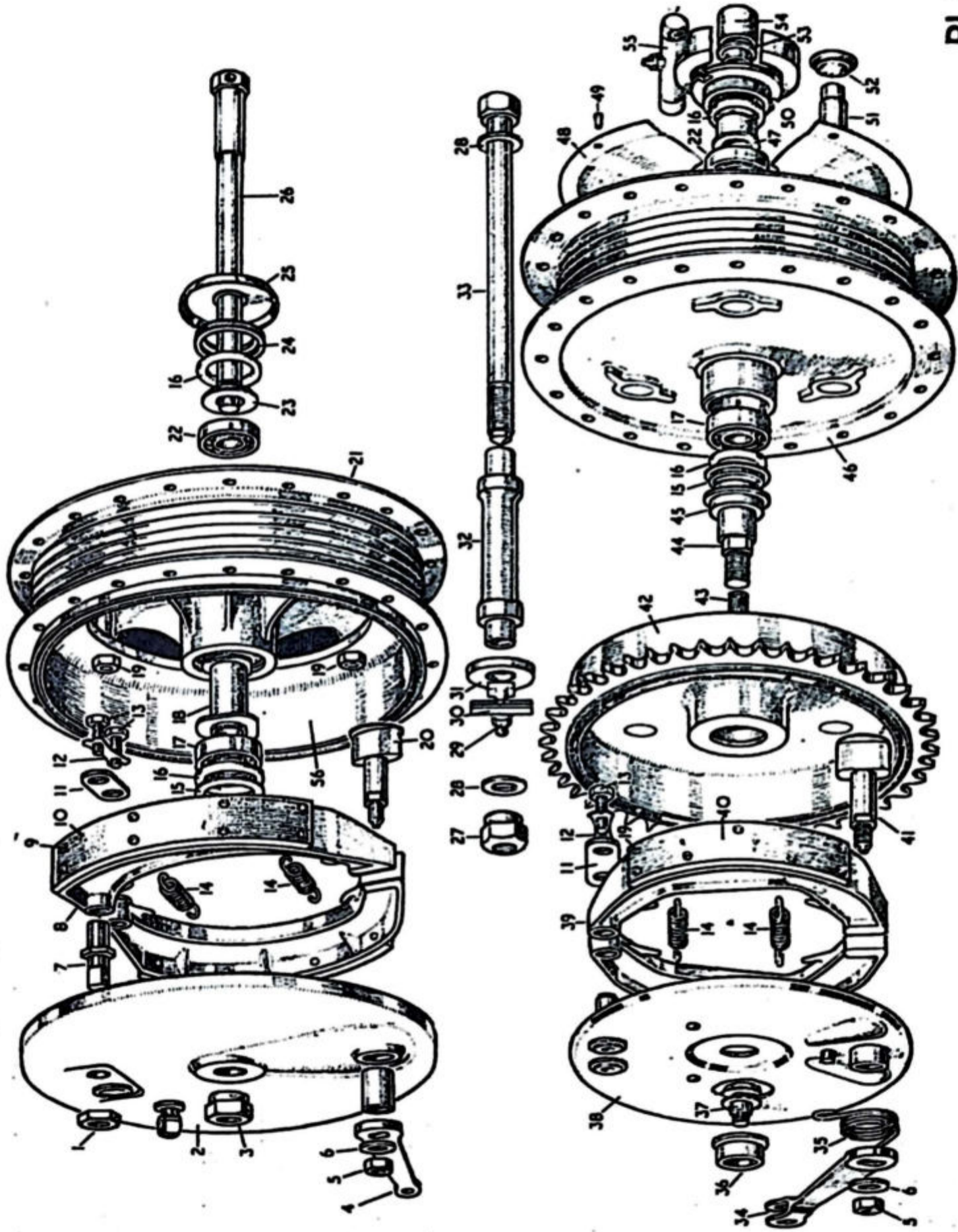
WHEEL RIMS AND SPOKES

B2/654	—	Wheel rim (front)	1	7	1 5 0
K122/654	—	Wheel rim (front)	1	88	1 5 0
A2/432	—	Wheel rim (rear)	1	7	1 5 0
K122/432	—	Wheel rim (rear)	1	88	1 5 0
B2/650	—	Wheel spoke, front, brake side (per set)	20	7	4 0
K122/650	—	Wheel spoke, front, brake side (per set)	20	88	4 0
B2/651	—	Wheel spoke, front, plain side (per set)	20	7	4 0
K122/651	—	Wheel spoke, front, plain side (per set)	20	88	4 0
B2/652	—	Wheel spoke, rear, brake side (per set)	20	7	4 0
K122/652	—	Wheel spoke, rear, brake side (per set)	20	88	4 0
B2/653	—	Wheel spoke, rear, plain side (per set)	20	7	4 0
K122/653	—	Wheel spoke, rear, plain side (per set)	20	88	4 0
A2/431	—	Spoke nipples (per set)	40	7, 88	4 6

FRONT CHAINCASE AND FITTINGS

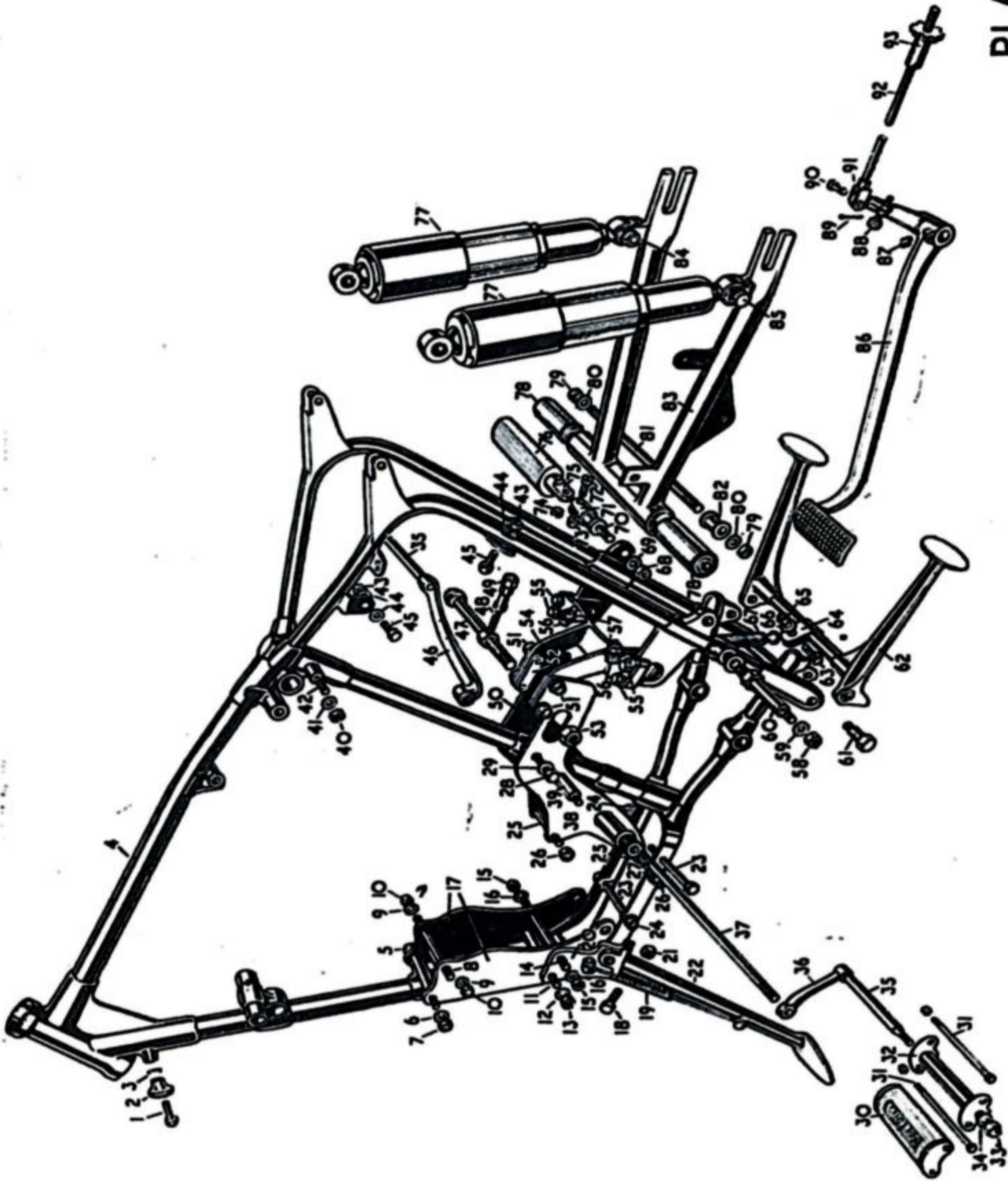
H12/484	—	Front chaincase, inner portion	1	7	3 4 0
H12-2/484	—	Front chaincase, inner portion	1	88	3 4 0
D12/485	—	Front chaincase, outer portion	1	7	3 10 0
H12-2/485	—	Front chaincase, outer portion	1	88	3 10 0
A2/486	—	Front chaincase sealing washer	1	7, 88	9 0
E3336	—	Front chaincase drain plug	1	7, 88	8
E5264	—	Front chaincase drain plug washer	1	7, 88	3
A2/487	—	Front chaincase inspection disc	1	7, 88	2 0
A2/488	—	Front chaincase inspection disc washer	1	7, 88	1 0
A2/489	—	Front chaincase inspection disc spring clip	1	7, 88	1 0
E6354	—	Front chaincase inner portion crankcase attachment pin	1	7, 88	5
A2/490	—	Front chaincase pin locking plate	1	7, 88	4
D12/491	JY.39	Front chaincase inner portion engine plate attachment bolt	1	7	3 6
E3223	—	Nut for bolt	2	7	4
E5456	—	Washer for bolt	2	7	4
A2/493	—	Front chaincase inner portion gearbox felt washer	1	7, 88	8

PLATE KR



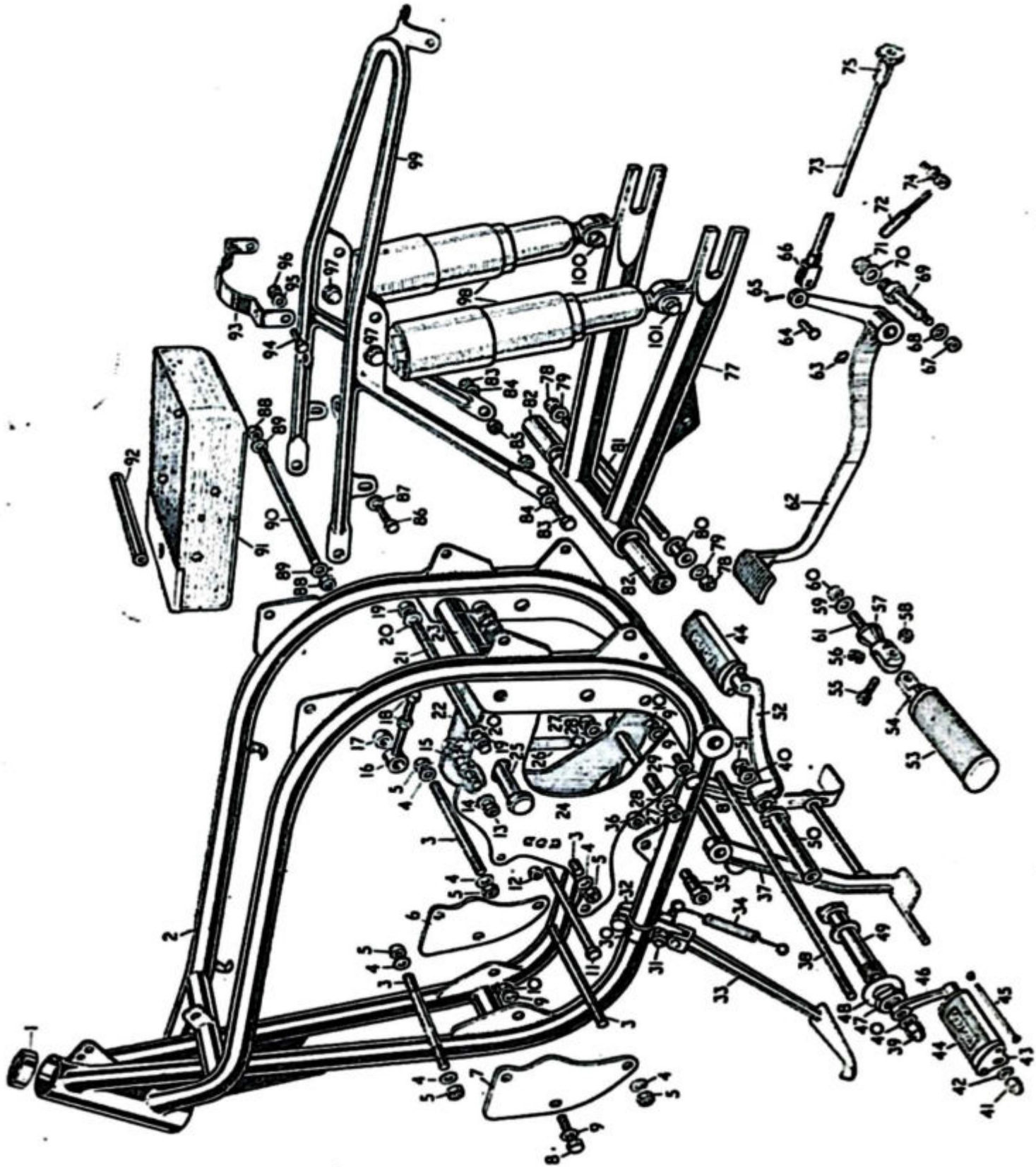
PART No.	PLATE No.	DESCRIPTION	QTY.	USED ON	PRICE EACH
FRONT CHAINCASE AND FITTINGS—cont.					£ s. d.
A2/494	—	Front chaincase inner portion footrest tube felt washer	1	7, 88	4
H12-2/491	JZ.15	Front chaincase inner portion and prop stand stud	1	88	3 6
E3223	JZ.13	Nut for stud	1	88	4
E5379	JZ.14	Washer for stud	1	88	3
D12/492	—	Front chaincase inner portion crankcase washer	1	7, 88	9
A2/495	JZ.47	Front chaincase outer portion securing nut	1	7, 88	2 4
A2/496	JZ.48	Front chaincase outer portion securing nut washer	1	7, 88	2 0
REAR CHAINGUARD AND FITTINGS					
H12/497	—	Rear chainguard	1	7	1 8 0
H12-2/497	—	Rear chainguard	1	88	1 8 0
12342	—	Rear chainguard front fixing bolt	2	7, 88	5
E3229	—	Rear chainguard front fixing bolt nut	2	7, 88	4
E5379	—	Rear chainguard front fixing bolt washer	2	7, 88	3
15817	—	Rear chainguard rear fixing bolt	2	7, 88	1 0
E3229	—	Rear chainguard rear fixing bolt nut	2	7, 88	4
E5379	—	Rear chainguard rear fixing bolt washer	2	7, 88	3
16879	—	Rear chainguard distance piece	2	7	6
15816	—	Rear chainguard distance piece	2	88	6
REAR BRAKE PEDAL AND FITTINGS					
H12/498	JY.86	Rear brake pedal	1	7	1 4 0
H12-2/498	JZ.62	Rear brake pedal	1	88	1 4 0
A2/500	JY.87/JZ.63	Rear brake pedal grease nipple	1	7, 88	1 0
A2/501	JY.88	Rear brake pedal adjuster and nut	1	7, 88	1 6
D12/502	JY.60	Rear brake pedal pivot bolt	1	7	2 0
E3223	JY.58	Nut for bolt	1	7	4
E5456	JY.59	Washer for bolt	1	7	3
H12-2/502	JZ.69	Rear brake pedal pivot bolt	1	88	2 0
E3227	—	Nut for bolt	1	88	5
11809	—	Washer for bolt	1	88	3
H12/503	JY.92	Rear brake rod	1	7	6 0
H12-2/503	JZ.73	Rear brake rod	1	88	6 0
H12/504	JY.91/JZ.66	Rear brake rod jaw joint	1	7, 88	4 6
H12/505	JY.93/JZ.75	Rear brake rod adjuster	1	7, 88	3 0
H12/506	JY.90/JZ.64	Rear brake rod jaw joint pin	1	7, 88	5
15822	—	Rear brake rod roller (cam lever end)	1	7, 88	6
FOOTRESTS AND FITTINGS					
A2/507	JY.30/JZ.44	Footrest rubber	2	7, 88	2 6
A2/508	JY.31/JZ.45	Footrest rubber bolt and nut	4	7, 88	10
A2/509	JY.32/JZ.43	Footrest pad holder	2	7, 88	5 6
D12/510	JY.37/JZ.38	Footrest rod	1	7, 88	4 0
E3226	JZ/51	Footrest rod nut (plain)	1	7, 88	5
E3220	JZ/39	Footrest rod nut (domed)	1	7, 88	10
E5377	JZ/40	Footrest rod washer	2	7, 88	3
A2/512(LH)	JZ/46	Footrest hanger with spindle (left-hand)	1	7, 88	12 0
D12/512(RH)	JZ/52	Footrest hanger with spindle (right-hand)	1	7, 88	15 0
A2/513(LH)	JY.36	Footrest hanger only (left-hand)	1	7, 88	9 8
D12/513(RH)	JY.46	Footrest hanger only (right-hand)	1	7, 88	12 6
A2/514	JY.35	Footrest hanger spindle only	2	7, 88	2 4
A2/515	JY.33/JZ.41	Footrest hanger spindle nut	2	7, 88	5
E5376	JY.34/JZ.42	Footrest hanger spindle washer	2	7, 88	3
H12-2/1077	JZ/49	Footrest tube (serrated end), left-hand	1	88	7 0
H12-2/1078	JZ/50	Footrest tube (serrated end), right-hand	1	88	5 0
ENGINE PLATES					
D12/522	JY.17	Front engine plate (left- or right-hand)	2	7	8 0
H12-2/522(LH)	JZ.7	Front engine plate (left-hand)	1	88	6 0
H12-2/522(RH)	JZ.6	Front engine plate (rear-hand)	1	88	6 0

PLATE JY



PART No.	PLATE No.	DESCRIPTION	QTY.	USED ON	PRICE EACH
ENGINE PLATES—cont.					£ s. d.
E12/516	JY.38	Rear engine plate with footrest tube (left-hand)	1	7	19 0
H12-2/516	JZ.24	Rear engine plate (left-hand)	1	88	1 0 0
D12/517	JY.50	Rear engine plate (right-hand)	1	7	12 6
H12-2/517	JZ.22	Rear engine plate (right-hand)	1	88	1 0 0
H12/1091	JY.54	Rear mudguard and engine plate support bridge	1	7	17 6
E3135	JY.55	Support bridge fixing bolt	4	7	8
E5380	—	Washer for bolt	4	7	3
H122/1091	JZ.23	Rear mudguard and engine plate support tube	1	88	12 6
I5893	JZ.21	Bolt for support tube	1	88	2 0
E3226	JZ.19	Nut for bolt	2	88	5
E5375	JZ.30	Washer for bolt	2	88	3
ENGINE SPROCKET					
D12/473	TA/129	Engine sprocket	1	7, 88	1 2 0
A2/474	TA/127	Engine sprocket key	1	7, 88	3
A2/475	TA/130	Engine sprocket locknut	1	7, 88	1 0
(State size of sprocket when ordering.)					
FRONT AND REAR CHAINS					
H12-2/477	—	Front chain, 75 link	1	88	1 5 0
D12/477	—	Front chain, 76 link	1	7	1 5 0
H12/2/478	—	Rear chain, 98 link	1	88	2 3 0
H12/478	—	Rear chain, 91 link	1	7	2 3 0
REAR CHAIN ADJUSTERS					
H12/483	—	Rear chain adjuster complete	2	7, 88	4 0
H12/666	KR.31	Rear chain adjuster bolt only	2	7, 88	2 6
E3223	KR.29	Rear chain adjuster bolt nut	4	7, 88	4
H12/668	KR.30	Rear chain adjuster fork end cap	2	7, 88	1 0
FRAME					
H12/518	JY.4	Frame with head races	1	7	30 0 0
K12-2/518	JZ.2	Frame assembly	1	88	30 0 0
A2/519	—	Frame head race, top	1	7	7 6
A2/520	—	Frame head race bottom	1	7	7 6
A2/521	—	Frame head balls (per set 34)	1	7	4 0
I3195	JY.1	Frame fork stop bolt	2	7	8
I1796	JY.3	Frame fork stop bolt washer	4	7	3
B2/877	JY.2	Frame fork stop bolt distance piece	2	7	6
I25AC	JZ.1	Frame head top or bottom ball race	2	88	15 0
I5631	—	Felt washer for top frame ball race	1	88	4
REAR SUSPENSION					
H12/1081	JY.77/JZ.98	Rear shock absorber unit	2	7, 88	3 5 0
I6839	JZ.97	Shock absorber top fixing bolt	2	88	1 0
I6459	—	Distance piece for top fixing bolt	2	88	6
E3223	—	Nut for top fixing bolt	2	88	4
E5379	—	Washer for top fixing bolt	4	88	3
I5901	JZ.101	Shock absorber bottom fixing bolt	2	88	1 0
E3223	JZ.100	Nut for bottom fixing bolt	2	88	4
E5379	—	Washer for bottom fixing bolt	4	88	3
I6839	—	Shock absorber top fixing bolt	2	7	1 0
E3223	—	Nut for top fixing bolt	2	7	4
E5456	—	Washer for top fixing bolt	2	7	3
I8537	—	Distance piece between mudguard	2	7, 88	6
I5900	JY.85	Shock absorber bottom fixing bolt	2	7	1 0
E3223	JY.84	Nut for bottom fixing bolt	2	7	4
E5379	—	Washer for bottom fixing bolt	4	7	3

PLATE JZ



PART No.	PLATE No.	DESCRIPTION	QTY.	USED ON	PRICE EACH
					£ s. d.
SWINGING ARM AND FITTINGS					
H12/1088	—	Swinging arm assembly with bushes and bolt	1	7	6 5 0
H12-2/1088	—	Swinging arm assembly with bushes and bolt	1	88	6 5 0
H12/1089	JY.83	Swinging arm only	1	7	5 0 0
H12-2/1089	JZ.77	Swinging arm only	1	88	5 0 0
H12/1090	JY.82	Swinging arm bearing spacer tube	1	7	3 0
H12-2/1090	JZ.80	Swinging arm bearing spacer tube	1	88	3 0
E21043	JY.78/JZ.82	Swinging arm silent bloc bearing	2	7, 88	7 6
16809	JY.81	Swinging arm securing bolt	1	7	4 0
16840	JY.79	Nut for bolt	1	7	8
11809	JY.80	Washer for bolt	1	7	3
15894	JZ.81	Swinging arm securing bolt	1	88	4 0
15356	JZ.78	Nut for bolt	2	88	8
11809	JZ.79	Washer for bolt	2	88	3
CENTRE PROP STAND AND FITTINGS					
H12/524	JY.62	Prop stand	1	7	1 5 0
H12-2/524	JZ.37	Prop stand	1	88	1 5 0
11466	JY.61	Prop stand fixing bolt	2	7	9
16763	JZ.35	Prop stand fixing bolt	2	88	9
16764	JZ.36	Prop stand fixing bolt nut	1	7	4
H12/527	JY.67	Prop stand spring	1	7	2 0
H12/2/527	JZ.26	Prop stand spring	1	88	2 0
H12/1082	JY.64	Prop stand spring clip	1	7, 88	1 0
E3135	JY.63	Bolt for spring clip	1	7, 88	8
E3231	JY.65	Bolt nut for spring clip	1	7, 88	4
E5380	JY.66	Bolt washer for spring clip	1	7, 88	3
SIDE PROP STAND AND FITTINGS					
E12/1014	JY.22	Side prop stand	1	7	1 1 0
H12-2/1014	JZ.33	Side prop stand	1	88	1 1 0
E2/1015	JY.19	Side prop stand spring	1	7	2 0
H12-2/1015	JZ.34	Side prop stand spring	1	7	2 0
E12/1016	JY.20	Side prop stand fixing plate	1	7	5 0
E6706	JY.18	Side prop stand head bolt	1	7	9
12079	JY.21	Side prop stand head bolt nut	1	7	4
H12/2/1092	JZ.30	Side prop stand half clip	1	88	10 0
16373	JZ.32	Side prop stand fixing lug stud and spring retainer	1	88	2 0
16842	—	Side prop stand fixing lug stud	1	88	1 0
H12-2/1093	JZ.31	Side prop stand fixing lug stud nut	1	88	6
FRONT MUDGUARD STAYS AND FITTINGS					
K12/529	—	Front mudguard with number plate studs	1	7	1 0 0
H12-2/529	—	Front mudguard with number plate studs	1	88	1 0 0
E2/530	—	Front mudguard stay (left- or right-hand)	2	7	3 6
E2/530	—	Front mudguard stay (left- or right-hand)	4	88	3 6
12342	—	Front mudguard stay pin	4	7, 88	5
E5229	—	Front mudguard stay pin nut	4	7, 88	4
E5379	—	Front mudguard stay pin washer	4	7, 88	3
14455	—	Front mudguard stay fork end bolt	2	7, 88	8
E5379	—	Front mudguard stay fork end bolt washer	2	7, 88	3
E2/680	—	Front mudguard centre stay	1	7	6 6
H12-2/680	—	Front mudguard centre stay	1	88	6 6
12342	—	Front mudguard centre stay pin	2	7, 88	5
E3229	—	Front mudguard centre stay pin nut	2	7, 88	4
E5379	—	Front mudguard centre stay pin washer	2	7, 88	3
T1085	—	Front mudguard centre stay fork attachment stud	4	7, 88	6
E3229	—	Front mudguard fork attachment stud nut	4	7, 88	4
E5379	—	Front mudguard fork attachment stud washer	2	7, 88	3
E3262	—	Front mudguard stand attachment bolt	1	7	8

PART No.	PLATE No.	DESCRIPTION	QTY.	USED ON	PRICE EACH
FRONT MUDGUARD STAYS AND FITTINGS—cont.					£ s. d.
E3223	—	Front mudguard stand attachment bolt	1	7	4
E3218	—	Front mudguard stand attachment bolt plain nut	1	7	6
E5456	—	Front mudguard stand attachment bolt domed nut	2	7	3
REAR MUDGUARD AND FITTINGS					
K12/534	—	Rear mudguard	1	7	2 10 0
K12-2/534	—	Rear mudguard	1	88	2 10 0
H12/536(LH)	—	Rear mudguard stay and handle (left-hand)	1	7, 88	5 0
H12/536(RH)	—	Rear mudguard stay and handle (right-hand)	1	7, 88	5 0
E6354	—	Stay and handle mudguard attachment bolt	4	7	5
E3223	—	Stay and handle mudguard attachment bolt nut	4	7	4
E5456	—	Stay and handle mudguard attachment bolt washer	4	7	3
I2343	JY.56	Rear mudguard bottom attachment bolt ..	2	7	8
E3229	JY.57	Nut for bottom attachment bolt	2	7	4
E5379	—	Washer for bottom attachment bolt ..	2	7	3
H12-2/1083	JZ.93	Rear mudguard bridge strap	1	88	3 6
I4468	—	Rear mudguard attachment bolt (top rear and bottom)	6	88	6
E3229	JZ.96	Nut for attachment bolt	6	88	4
E5379	JZ.95	Washer for attachment bolt	12	88	3
NUMBER PLATES, FRONT AND REAR					
K12/531	—	Front number plate	1	7	3 0
A2/531	—	Front number plate	1	88	2 0
A2/533	—	Front number plate pin and nut	2	88	3
I8755	—	Front number plate rubber	1	7	9
I8712	—	Front number plate screw	2	7	3
A2/875	—	Front mudguard number plate clip and nut	2	88	1 0
I8708	—	Front number plate stanchion	2	7	9
E3229	—	Nut for stanchion	2	7	4
E5379	—	Washer for stanchion	2	7	3
K12/532	—	Rear number plate	1	7, 88	12 6
I4468	—	Rear number plate pins	2	7, 88	6
I8629	—	Rear number plate rubber	1	7, 88	1 6
TOOL BOX AND FITTINGS					
K12/538	—	Tool box	1	7	1 5 0
A2/539	—	Tool box knob	1	7	2 4
A2/281	—	Tool box knob cotter pin	1	7	2
I2343	JY.45	Tool box fixing bolt	3	7	8
E3229	JY.43	Nut for bolt	3	7	4
E5379	JY.44	Washer for bolt	3	7	3
H12-2/538	JZ.91	Tool tray	1	88	7 6
I2342	JZ.86	Tool tray fixing bolt	2	88	5
E3229	—	Nut for bolt	2	88	4
E5379	JZ.87	Washer for bolt	4	88	3
DUAL SEAT AND FITTINGS					
K12-540	—	Dual seat	1	7	5 10 0
H12-2/540	—	Dual seat	1	88	5 10 0
H12/1094	—	Dual seat front bracket	1	7	12 6
I5750	—	Dual seat front bracket bolt	1	7	2 6
E3223	—	Nut for bracket bolt	2	7	4
E5456	—	Washer for bracket bolt	2	7	3
K12/1094	—	Dual seat rear bracket	1	7	7 6
I7010	—	Fixing bolt front and rear bracket ..	4	7	9
E5456	—	Washer for bolt	4	7	3
I6765	—	Wing nut for fixing dual seat	2	88	1 6

PART No.	PLATE No.	DESCRIPTION	QTY.	USED ON	PRICE EACH
FRONT STAND					£ s. d.
A2/544	—	Front stand	1	7	1 0 0
E6354	—	Front stand attachment pin	2	7	5
E5379	—	Front stand attachment pin washer	2	7	3
E3223	—	Front stand attachment pin nut	2	7	4
BATTERY CARRIER					
H12/586	—	Battery carrier	1	7	15 0
I3053	JY.42	Battery carrier top fixing stud	1	7	6
E3223	JY.40	Nut for top fixing stud	1	7	4
I1795	JY.41	Washer for top fixing stud	1	7	3
E6453	—	Battery carrier bottom fixing bolt	2	7	6
E3223	—	Nut for bottom fixing bolt	2	7	4
H12-2/1084	—	Battery carrier strap	1	88	5 0
H12-2/1085	—	Cotter for strap	1	88	4
I5722	—	Roller for strap	1	88	8
I5723	—	Bolt for roller	1	88	10
(See oil tank fittings for platform and mat.)					
SPEEDOMETER AND FITTINGS					
D12/545	—	Speedometer head	1	7, 88	3 10 0
B2/681	—	Speedometer head rubber washer	1	7, 88	6
B2/555	—	Speedometer head attachment bracket	1	7, 88	1 6
B2/556	—	Speedometer head securing nut	2	7, 88	4
B2/557	—	Speedometer head securing washer	2	7, 88	3
B2/552	—	Speedometer cable complete	1	7	1 5 0
H12-2/552	—	Speedometer cable complete	1	88	1 5 0
B2/553	—	Speedometer cable outer	1	7	12 6
H12-2/553	—	Speedometer cable outer	1	88	12 6
B2/554	—	Speedometer cable inner	1	7	12 6
H12-2/554	—	Speedometer cable inner	1	88	12 6
B2/564	KR.55	Speedometer gearbox complete	1	7, 88	2 2 6
PILLION FOOTRESTS					
H12/584	—	Pillion footrests complete (per pair)	1	7, 88	1 1 0
H12/1086	JY.75/JZ.54	Pillion footrest bar with eye bolt	2	7, 88	4 0
H12/1087	JY.71/JZ.57	Pillion footrest lug	2	7, 88	5 0
I6841	JY.70/JZ.61	Stud pillion footrests and silencer fixing	2	7, 88	10
E3224	JY.68/JZ.60	Nut for stud	2	7, 88	4
E5376	JY.69/JZ.59	Washer for stud	2	7, 88	3
I6248	JY.72/JZ.55	Pillion footrest bar and lug pin	2	7, 88	8
I6250	JY.74/JZ.56	Spring washer for pin	2	7, 88	2
I6247	JY.73/JZ.58	Nut for pin	2	7, 88	4
H12/583	JY.76/JZ.53	Pillion footrest rubber (left- or right-hand)	2	7, 88	3 0
HEADLAMP AND FITTINGS (Model 88 De-Luxe)					
51327	—	Headlamp (less cable SS700P/1)	1	—	3 5 0
553925	—	Headlamp reflector and glass	1	—	14 6
553248	—	Headlamp rim	1	—	12 6
31304	—	Headlamp switch	1	—	12 0
36084F	—	Ammeter (CZU.27)	1	—	8 9
HEADLAMP AND FITTINGS					
50951	—	Headlamp with switch and ammeter (less cable)	1	7	5 2 6
553248	—	Headlamp rim	1	7	12 6
553925	—	Headlamp reflector and glass	1	7	14 6
36084	—	Ammeter	1	7	8 9
351567	—	Switch lever and screw	1	7	3 0
308312	—	Headlamp panel with switch and ammeter	1	7	1 13 0
I8732	—	Dipper switch	1	7	6 6
I8733	—	Dipper switch mounting rubber	1	7, 88	6
I8734	—	Dipper switch fixing screws	2	7, 88	3
I2201	—	Headlamp fixing bolt	2	7, 88	8

PART No.	PLATE No.	DESCRIPTION	QTY.	USED ON	PRICE EACH
STOP LAMP AND FITTINGS					£ s. d.
53269A	—	Stop lamp complete	1	7, 88	1 5 0
573819	—	Stop lamp cover	1	7, 88	7 0
572072	—	Stop lamp cover fixing bolt	2	7, 88	6
166014	—	Stop lamp cover fixing bolt nut	2	7, 88	3
185036	—	Stop lamp cover fixing bolt washer	2	7, 88	2
31281B	—	Stop lamp switch	1	7, 88	4 6
17005	—	Stop lamp switch spring	1	7, 88	9
—	—	Stop lamp switch bracket	1	7	2 6
17008	—	Stop lamp switch bracket	1	7, 88	2 6
14468	—	Stop lamp switch fixing bolt	2	7, 88	6
E3229	—	Nut for fixing bolt	2	7, 88	4
E5379	—	Washer for bolt	2	7, 88	3
18721	—	Rear mudguard reflector	1	7, 88	3 0
VOLTAGE REGULATOR AND FITTINGS					
37097	—	Voltage regulator (MCR.2)	1	7, 88	1 19 0
12343	—	Voltage regulator fixing pin	2	7, 88	8
E3229	—	Voltage regulator fixing pin nut	4	7, 88	4
E5379	—	Voltage regulator fixing pin washer	4	7, 88	3
ELECTRIC HORN AND FITTINGS					
70092A	—	Electric horn (HF1441)	1	88	1 15 0
12342	—	Horn fixing bolt	2	88	5
E3229	—	Nut for bolt	2	88	4
E5379	—	Washer for bolt	2	88	3
AIR FILTER AND FITTINGS					
K12/1058	—	Air cleaner	1	7	1 10 0
K122/1058	—	Air cleaner	1	88	1 10 0
K12/1059	—	Air cleaner screwed adaptor	1	7, 88	5 0
TOOLS					
A2/561	—	Tyre inflator with connection	1	7, 88	8 0
A2/562	—	Tyre inflator connection	1	7, 88	3 6
D12/563	—	Tool roll complete with tools	1	7, 88	2 17 6
A2/565	—	Double-ended spanner, $\frac{3}{16}$ in. x $\frac{1}{4}$ in.	1	7, 88	2 0
A2/566	—	Double-ended spanner, $\frac{5}{16}$ in. x $\frac{3}{8}$ in.	1	7, 88	2 8
A2/567	—	Screwdriver	1	7, 88	2 6
D12/568	—	Tapper spanners (per pair)	1	7, 88	2 0
A2/570	—	Wheel nut box spanner	1	7, 88	2 0
A3/571	—	Sparking plug spanner	1	7, 88	4 0
A2/573	—	Tyre lever	2	7, 88	2 0
A2/574	—	Wheel spindle spanner	1	7, 88	2 8
A2/578	—	Single-ended spanner, $\frac{1}{8}$ in.	1	7, 88	1 0
A3/579	—	Exhaust pipe "C" spanner	1	7, 88	3 0
A2/581	—	Tommy bar	1	7, 88	1 0
B2/682	—	Front fork crown and column locknut spanner	1	7, 88	2 6
B2/683	—	Front fork filler plug and head adjuster nut spanner	1	7, 88	3 0
B2/684	—	Front fork main tube top bush locking spanner	1	7, 88	2 0
B2/685	—	Pull through for road-holder fork	1	7, 88	7 6
TRANSFERS					
A2/866	—	Petrol tank name transfer top panel	1	7, 88	1 2
A2/867	—	Front chaincase transfer	1	7, 88	1 2
A2/868	—	Oil tank transfer (minimum oil level)	1	7, 88	1 2
A2/869	—	Rear mudguard transfer	1	7, 88	1 2
(Please Note.—Panels, red and black lines cannot be supplied. These are painted by hand.)					
RUBBER CABLE CLIPS					
Size "A"	—	For clutch, air throttle mag. cables and headlamp cable harness to top frame tube	1	—	4
Size "D"	—	For tail lamp lead	1	—	4
Size "S"	—	For speedometer cable and battery lead	1	—	4